



SMI

Center for Sensory-Motor Interaction

Chronic Pain after Total Knee Replacement



Doctor of Philosophy Thesis by
Kristian Kjær Petersen



River Publishers

Chronic Pain after Total Knee Replacement

Chronic Pain after Total Knee Replacement

Doctor of Philosophy Thesis

Kristian Kjær Petersen

*Center for Sensory-Motor Interaction,
Department of Health Science and Technology,
Aalborg University, Denmark*



River Publishers

ISBN 978-87-93237-47-6 (Ebook)

Published, sold and distributed by:

River Publishers
Niels Jernes Vej 10
9220 Aalborg Ø
Denmark

Tel.: +45369953197
www.riverpublishers.com

Copyright for this work belongs to the author, River Publishers have the sole right to distribute this work commercially.

All rights reserved © 2014 Kristian Kjær Petersen.

No part of this work may be reproduced, stored in a retrieval system, or transmitted in any form or by any means, electronic, mechanical, photocopying, microfilming, recording or otherwise, without prior written permission from the Publisher.

Acknowledgement

The studies for this PhD were carried out at the Center for Sensory Motor Interaction, Aalborg University and the hospitals in the Region of Northern Denmark between 2011 and 2014.

This work represents a thesis made possible by the support of many people whom I wish to express my gratitude. I want to thank my supervisors for giving me the opportunity to conduct this work, in particular, Professor Lars Arendt-Nielsen, who has been supervising me as a master student and now as a PhD student, for introducing me to the scientific world, always shown dedication, strong leadership and a never-ending hunger for knowledge, which I admire and highly respect. My background as an engineer has at times been a problem, when working in a clinical setting, why I want to thank the Orthopedic Surgery Research Unit, headed by my clinical supervisors doctor; Ole Simonsen, doctor Mogens Berg Laursen and doctor Sten Rasmussen, for the great cooperation, the fruitful clinical discussions and implications and an introduction to the clinical world.

I am deeply thankful to the Clinical Biochemical Department at Frederikshavn Hospital for the cooperation with completion of study III presented in this thesis; especially I am grateful to Tina Beith Christensen, who has shown strong leadership, always positive attitude and exceptional coordination skills. I want to thank the Research unit at Farsø Hospital, headed by doctor Mogens Berg Laursen, for the great cooperation and the data collection for study II presented in this thesis.

I want to thank Professor Thomas Graven-Nielsen, who primarily has been the head of my research group for Pain and Motor Systems and the PhD school but also for the several side projects we have conducted together and clarity on difficult scientific issues. I am deeply in debt to the secretary staff at Center for Sensory-Motor Interaction, especially Susanne Nielsen Lundis, Lone Schødt Andersen and Charlotte Villadsen, who have worked untiring to provide me with support for proofreading of manuscripts, protocols for the ethical committee and funding applications. The Danish Rheumatism Association, The Danish Advanced Technology Foundation, The Danish Council for Technology and Innovation, The Bevica Foundation, Lions Denmark and The Otto Mønsted Foundation is highly acknowledged and I am deeply grateful for the funding, which have made this work possible.

I would like to thank my parents Lone and Klaus, and my sister and brother, Louise and Søren, for the supporting attitude, interest in my work and for pushing me in the right directions. For the love and support, I would like to thank Gunilla and her family.

Finally, I would like to thank the unending list of friends at and around Aalborg University, which have made these last three years very enjoyable and some of the best years of my life – you know who you are.

Kristian Kjær Petersen

21 August 2014, Aalborg, Denmark

Preface

This PhD is in part based on three studies, referred to in the text as study I-III. The studies have been conducted in the period 2011-2014 at the Center for Sensory Motor Interaction, Aalborg University, Denmark. Please find appendix 1 for a quick glance at the methods applied, findings and conclusions from the three studies.

Study I: Petersen KK, Simonsen O, Laursen MB, Nielsen TA, Rasmussen S, Arendt-Nielsen L (2014). Chronic Postoperative Pain Following Primary and Revision Total Knee Arthroplasty. *Clinical Journal of Pain, in press.*

Study II: Petersen KK, Arendt-Nielsen L, Simonsen O, Wilder-Smith O, Laursen MB. Pre-surgical assessment of temporal summation of pain predicts the development of chronic postoperative pain 12 months after total knee replacement. *Submitted to Pain.*

Study III: Petersen KK, Siebuhr AS, Graven-Nielsen T, Simonsen O, Karsdal M, Bay-Jensen AC, Arendt-Nielsen L. Sensitization and serological biomarkers in knee osteoarthritis patients with different degrees of synovitis and pain. *Submitted to Osteoarthritis and Cartilage, under revision.*

Contents

Acknowledgement	2
Preface	3
Abbreviations	6
Introduction	7
Current perspectives on osteoarthritis	8
Taxonomy	8
Prevalence of osteoarthritis	9
Treatment of knee osteoarthritis	9
Pain in osteoarthritis	9
Sensitization of the nervous system	10
Excitability in the nervous system	10
Inhibition in the nervous system	10
Pain measurements	11
Quantitative measurements of pain mechanisms	11
Sensitization in osteoarthritis	12
Pressure pain threshold	13
Temporal summation	14
Conditioning pain modulation	15
Qualitative measurements of pain	15
Pain after surgery	17
Acute postoperative pain	17
Pain after the acute postoperative phase	17
Chronic postoperative pain	17
Risk factors of the development of chronic postoperative pain	17
Pain after revision surgery	18
Aim and overview of the PhD project	19
Methodological considerations	20
Protocols	20
Sample size calculation and statistical reflections	20
Study I	20
Study II	20
Study III	21
Questionnaires	21

Pain.....	21
Quantitative sensory testing	21
Synovitis	22
Serological biomarkers	23
Knee osteoarthritis as a model for the development of chronic postoperative pain	24
Pre- and postoperative pain in knee osteoarthritis	25
Prevalence of postoperative pain	25
Sensitization	26
Knee osteoarthritis patients in general	26
Subdivision of knee osteoarthritis patients	26
Link between preoperative sensitization and postoperative chronic pain	28
Synovitis and osteoarthritis.....	29
Serological biomarkers in osteoarthritis.....	30
Type I collagen - C1M.....	30
Type II collagen - C2M.....	30
Type III collagen – C3M.....	30
Inflammation – hsCRP and CRPM	31
Limitation of systemic biomarkers.....	31
Recommendations for clinical implications	32
Preoperative screening of sensory profile	32
Conclusive remarks.....	34
Dansk sammenfatning	35
English summery.....	36
Appendix 1: the PhD project at a glance.....	37
Appendix 2: Literature review of QST measurements used in OA research	38
References.....	40

Abbreviations

BLOKS - The Boston-Leeds OA Knee Score
CPM – Conditioning pain modulation
HsCRP – High-sensitive C-reactive protein
IASP – The International Association for the Study of Pain
KL – Kellgren & Lawrence scale
KOA – Knee osteoarthritis
KSS – The Knee Society Score questionnaire
MMPs – Matrix metalloproteinases
MRI – Magnetic Resonance Imaging
OA – Osteoarthritis
PPT – Pressure pain threshold
QST – Quantitative sensory testing
Re-TKR – Revision Total Knee Replacement
THR – Total hip replacement
TKR – Total knee replacement
VAS – Visual analog scale
WORMS - The Whole-Organ MRI Score
QoL – Quality of life

Introduction

An estimated 500 million working days are lost in Europe each year due to chronic pain, of which 1 million workdays are lost in Denmark. This corresponds to an economic loss of at least 252 billion DKK. In US the loss is estimated to be between 560 and 635 billion \$ per year. In addition, many patients end up on social welfare as a consequence of lost or reduced ability to work. Higher demand for more efficient drugs and medical devices for pain treatment thus continue to drive the pain management market. Therefore, technology enabling an improved diagnosis and as a result a more efficient and personalized treatment of chronic pain patients will have great perspectives.

It seems evident that preoperative sensitization of the nervous system holds prognostic information to if patients develop chronic postoperative pain. Chronic postoperative pain is defined by the International Association for the Study of Pain (IASP) as persistent pain six months after surgery. This thesis will focus on the prevalence of chronic postoperative pain after total knee replacement (TKR) surgery in knee osteoarthritis (KOA) patients and to subgroup KOA patients using quantitative sensory testing (QST), which is systematically method for quantifying alterations in the nervous systems sensory function. This thesis aims to describe 1) the prevalence of chronic postoperative pain after TKR surgery and 2) the connection between preoperative QST and postoperative chronic pain.

Current perspectives on osteoarthritis

Taxonomy

Osteoarthritis (OA) is considered a degenerative disease and is associated with pain, stiffness and decreased function of the joint. For over 50 years, radiological findings have been the most widely used method to characterize the presence of osteoarthritis, where the degeneration of the joint is often confirmed using X-ray imaging by applying the Ahlback¹ or Kellgren & Lawrence (KL)² system. The Ahlbeck method is generally used for severe KOA where the Kellgren & Lawrence method is more general for all KOA patients (table 1 for comparison). Most widely used in OA studies is the Kellgren & Lawrence system.

Interestingly, little association is found between radiological findings of the knee and pain intensities³⁻⁶, as some subjects have radiological KOA but no pain and vice versa⁷.

Ahlbäck grade	Ahlbäck definition	Kellgren & Lawrence grade	Kellgren & Lawrence definition
		Grade 0 "Non"	Non
		Grade 1 "Doubtful"	Minute osteophyte, doubtful significance
		Grade 2 "Mild"	Definite osteophyte, unimpaired joint space
Grade I	Joint space narrowing (joint space < 3mm)	Grade 3 "Moderate"	Moderate diminution of joint space
Grade II	Joint space obliteration	Grade 4 "Severe"	Joint space greatly impaired with sclerosis of subchondral bone
Grade III	Minor bone attrition (0-5 mm)	Grade 4 "Severe"	Joint space greatly impaired with sclerosis of subchondral bone
Grade IV	Moderate bone attrition (5-10 mm)	Grade 4 "Severe"	Joint space greatly impaired with sclerosis of subchondral bone
Grade V	Severe bone attrition (10>mm)	Grade 4 "Severe"	Joint space greatly impaired with sclerosis of subchondral bone

Table 1: Radiological grading of knee osteoarthritis - comparing the Ahlbäck and the Kellgren and Lawrence grading systems. Modified from Petersson et al., 1997⁸.

Prevalence of osteoarthritis

OA is the most frequent musculoskeletal diagnosis in the elderly population and the most common cause of disability⁹ where 40% of females and 25% of males aged 60-70 years are diagnosed with OA¹⁰. With the expected global growth in the elderly population and concomitant rise in sedentary lifestyle choices, the incidence of OA is predicted to increase in the coming years¹¹⁻¹³.

Treatment of knee osteoarthritis

Several pharmacological and non-pharmacological treatments are available in the early stages of KOA¹⁴ and weight loss and moderate exercise seems to give the patients pain relief¹⁵. The current treatment of severe KOA is total knee replacement (TKR) surgery. An interesting and novel protocol claims that exercise is as good as TKR surgery¹⁶; however, only the protocol and not any results have been published at this time point. In 2011 more than 8000 TKR surgeries were performed in Denmark¹⁷ and nearly half a million in the United States and believed to increase to almost 3.5 million in 2030¹⁸.

Even though TKR have a low rate of technical errors, 20% of the patients are rendered into chronic postoperative pain¹⁹. For total hip replacement (THR) the number is 10%²⁰. Only a few attempts have been made to subgroup KOA patients; however, these subgroups have shown different degeneration of the joint²¹ and pain profiles²². With the rising number of patients to treat and the risk of developing chronic postoperative pain – the industry, the researchers and the healthcare sector must develop new preoperative prediction methods for individual treatment to comply with this alarming problem.

Pain in osteoarthritis

OA is recognized as a disease involving all joint tissues²³. The specific pain mechanisms in OA are largely unknown although many studies have shown that sensitization of the pain system contributes^{22,24-27}.

The diagnosis of knee osteoarthritis (KOA) is based on a combination of symptomatic pain and stiffness and radiographic assessments such as the KL score². Interestingly for the individual patient there is little correlation between the pain intensity in KOA and the KL score⁶, suggesting that other factors than joint damage is involved. The pain from KOA can arise from different structures, such as subchondral bone, periosteum, tendons and the synovium^{4,28}, why inflammation of the synovium, synovitis, has been highly researched in the recent years. Interestingly, KOA is often diagnosed using radiological assessment of the degeneration of cartilage; however, no nociceptive fibers are located in the cartilage, why pain cannot arise from this structure^{4,28}. Inflammation leads to sensitization of peripheral nociceptors^{29,30}, why synovitis (inflammation of the synovial membrane)^{31,32} could sensitize the peripheral nociceptors in KOA⁴.

Sensitization of the nervous system

When a pain signal arises from the peripheral nervous system it is transmitted through the dorsal horn to the central nervous system. Presumably, chronic pain disorders arise from an initial peripheral nociceptive input, which can alter central nociceptive pathways³³. Wilder-Smith proposed that three key central aspects are important for targeting chronic pain; (1) is central sensitivity altered and is spreading hyperalgesia present, (2) is the descending central pain modulation limited, and (3) is the sensitivity related to a peripheral drive. Therapeutically, central sensitization should be considered as contributing factor to the pain, since studies have shown that once established, the sensitization respond poorly to opioid and peripheral nerve blockade treatment but requires special targeted treatment, such as special targeted neuropathic medical treatment³⁴. Pain related pathways in the peripheral and central nervous system can be altered by neurotransmitters, peptide hormones, neurosteroids and cytokines released in the synaptic or non-synaptic terminals, neighboring neurons or glia cells and can alter the neuronal excitability in the pain matrix³⁵⁻³⁸. At the central nervous system level, this is reflected as alterations in excitability and inhibitory mechanisms³⁹⁻⁴².

Excitability in the nervous system

In animal models, excitatory neuroplasticity (sensitization) is explained from activation (acute changes) through modulation (sub-acute changes) to modification (chronic changes)⁴³. Activation of transduction (peripheral nociceptors) and transmission (central processing) is considered a reversible process⁴³. Modulation is expressed as peripheral and central sensitization due to phosphorylation of receptors and ionophores and is a slowly revisable process. Modification is expressed as chronic pain due to altered regulation, cell connectivity and cell death, which affect the inhibitory system⁴³.

Inhibition in the nervous system

In the healthy organism, excitability in the nervous system should be countered by inhibition⁴⁴. An inhibitory response, a complex modulation of the excitatory nociceptive transmission from the peripheral to the central nervous system^{45,46}, can be both spinal and supraspinal. Descending inhibition originates in the medulla and midbrain and is closely related to parallel descending facilitatory systems⁴⁵⁻⁴⁸. The loss of the ability to produce an inhibitory response is considered an important factor for the development of chronic pain^{49,50}.

Pain measurements

The pain experienced by patients is complex and several attempts and options are available when assessing pain. This chapter is dedicated to different relevant measurements of pain.

Quantitative measurements of pain mechanisms

In 1990's and early 2000's it became apparent that methods for sensory testing were available⁵¹⁻⁶¹; however, there was no general agreement on standard procedures. Rolke and colleagues proposed a quantitative sensory testing (QST) platform in 2006, composed of 13 different sensory modalities, to diagnose sensitization in neuropathic pain⁶², including mechanical and thermal stimulations. QST is an assessment tool to diagnose peripheral and central sensitization in patients with musculoskeletal pain⁶³ and a tool for monitoring and diagnosing pain processing and its alterations in patients^{53,60}. The concept of QST is to use standardized defined stimuli to the patient under standardized conditions, while the patient rates the stimulus regarding the subjects experienced pain. QST provides information about the subjects pain sensitivity. The subject is asked to rate the stimulus regarding the experienced pain. The use of multiple stimulus modalities with different intensities or one prolonged stimuli with increasing intensity makes it possible to construct stimulus-response relationships, which characterize the subjects pain sensitivity. Increasing pain sensitivity can objectively be quantified by a leftwards shift compared to a healthy control subject (figure 1)⁶⁴.

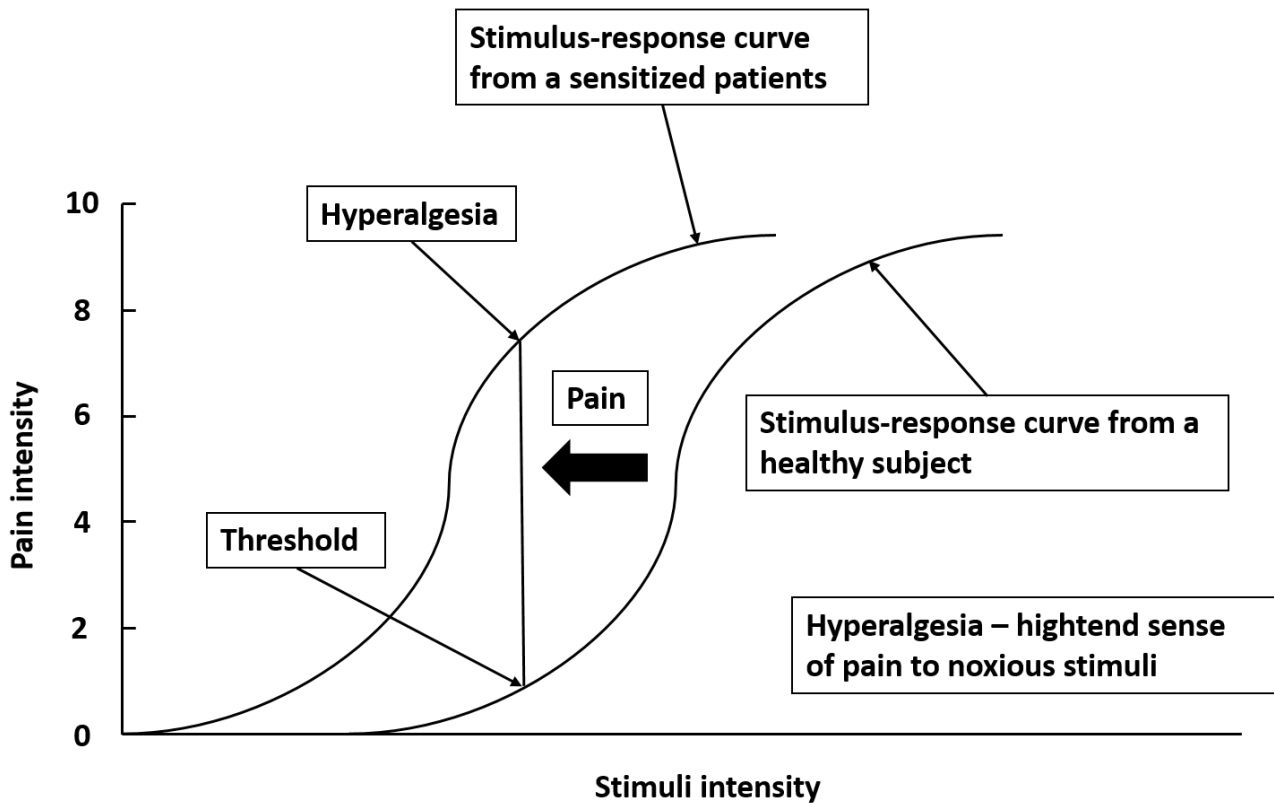


Figure 1: Stimulus-response curves for a sensitized patient and a healthy subject. The stimulus-response curve for the sensitized patient is shifted leftwards by the nociceptive input accompanying pain, which can cause hyperalgesia. Modified from Wilder-Smith, 2013³³.

QST aims to give a deeper insight into the pain mechanisms compared e.g. to the simple visual analogue scale (VAS); however, QST is time consuming and requires that the subject is trained in rating pain stimuli accurately and reliably⁶⁴. Combining different stimulation techniques allows for a more “complete” quantification of the state of the nervous system^{65,66}.

Sensitization in osteoarthritis

Pain can arise from several structures in the joint e.g. the subchondral bone, the periosteum or the synovial membrane^{4,28}. Each structure needs to be examined to understand the origin of pain in OA. Several studies have shown that increased pain is associated with increased sensitization^{22,26,67-69} but fewer studies have focused on the association between pain from specific tissues and sensitization.

Recent reviews by Sukoas et al., 2012⁷⁰ and Lluch et al., 2014⁷¹ concludes that central sensitization is highly involved in the pain in OA (see appendix 2 for an overview).

OA is associated with local and widespread hyperalgesia compared to controls^{24,26,67,69,72-74}, which is improved after joint replacement surgery^{24,72,75}. Higher degree of general sensitization (i.e.

around the knee) have been shown to be related to higher levels of pain^{22,26,67-69}, disability and poorer quality of life⁶⁹, poorer outcome after TKR surgery⁷⁶ and higher concentration of pro-inflammatory cytokines⁷³. In addition, allodynia, both widespread⁷² and locally^{74,77}, has been documented in OA patients compared to controls. Furthermore, increased facilitated temporal summation applied by either thermal⁷⁸ or mechanical stimuli^{24,26} has been documented in OA patients compared with controls. Dysfunctional endogenous nociceptive inhibition, measured as impaired conditioning pain modulation (CPM), has been documented in patients with OA^{24,26,49}, which is restored after joint replacement^{24,49}.

Increased excitability of the nociceptive flexion reflex (a measure of central nociceptive processes) has been documented in patients with severe KOA compared to controls⁷⁹.

KOA patients demonstrating more than one location of pain often express pain symptoms being more diffuse and spreading to larger areas⁸⁰, supporting the notion that spreading sensitization may be present in these patients⁸¹. Pain intensity and duration of KOA have been found to be associated with the degree of sensitization²⁶. Pressure pain thresholds (PPTs) have been shown to be decreased in patients with KOA before TKR surgery²⁶ and normalized after TKR surgery²⁴. CPM has been shown to be low in KOA patients before surgery compared to controls; however, increased after surgery. Pre and post TKR treatment with pregabalin seems to inhibit the development of chronic postoperative neuropathic pain⁸², which may indicate that sensitization plays a key role in determining the outcome of TKR.

Sensitization seems to be normalized in the general KOA population when comparing pre- and postoperative QST measurements^{24,49}; however, 20% of KOA patients report chronic postoperative pain after TKR surgery²⁰, indicating that these patients could have different preoperative sensitization profiles. Patients with ongoing pain after primary TKR surgery can be offered revision TKA surgery (re-TKA) but re-TKR is involved with high risk of a poor outcome. Patients with pain after re-TKR surgery show widespread hyperalgesia, facilitated temporal summation and lower CPM compared with patients with no pain after re-TKR surgery²⁵. Facilitated temporal summation is more predominant in patients with widespread hyperalgesia after re-TKR surgery compared to KOA patients before primary TKR surgery⁸³, which indicates that re-TKR surgery should be considered with care.

Mechanical stimulations have been the main focus of understanding sensitization in OA patients, where pressure pain thresholds (PPTs), temporal summation and CPM are the most widely used^{12,24-26,74}. In addition, Nezir et al., 2012⁸⁴ ranked QST measures according to their association with chronic pain in low back pain patients and found PPTs and mechanical temporal summation as high-ranking measurements.

Pressure pain threshold

PPTs are used to understand deep-tissue hyperalgesia and to determine local and spreading sensitization^{85,86}. PPTs are often assessed using a pressure algometry and applying standardized

protocols. Pressure algometry activates the nociceptors in the deeper tissues (muscle and a) through the skin⁸⁶⁻⁸⁸.

Tenderness of damaged muscle is most likely due to peripheral sensitization of deep-tissue nociceptors⁸⁵. In widespread pain conditions, the involvement of peripheral sensitization is most likely supplemented by central sensitization phenomenon.

Local and widespread hyperalgesia have been documented in numerous musculoskeletal disorders, such as OA^{24,26} and patellofemoral pain syndrome⁸⁹.

Temporal summation

Temporal summation is a measure for central integrative mechanisms induced by sequence of stimuli with the same intensity, where a progressive increase in pain occurs⁸⁵. Temporal summation mimics the initial phase of the wind-up process, which has been measured in the dorsal horn in animal studies⁹⁰. Healthy controls will feel the 10th stimuli as slightly more painful compared to the 1st stimuli, whereas sensitized patients will feel a large pain difference²⁶, as seen in figure 2 below.

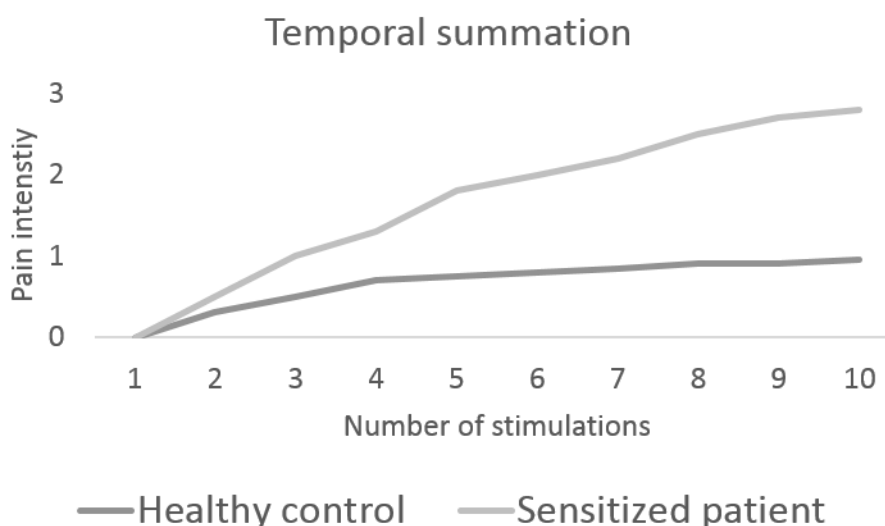


Figure 2: An example of temporal summation from a healthy control and a sensitized KOA patient. The patient has facilitated temporal summation and repeated stimuli with the same intensity are experienced as increasingly painful.

Temporal summation can be applied using e.g. electrical⁹¹ or pressure²⁶ stimuli. In central sensitization, the central integrative mechanisms are unregulated resulting in facilitated temporal summation, which is seen in e.g. KOA²⁴⁻²⁶, fibromyalgia⁹² and in chronic pain patients with multiple sclerosis. Enhanced temporal summation of pain involves e.g. the neurotransmitter N-methyl-D-aspartate (NMDA)^{93,94} and administration of ketamine, an NMDA antagonist, reduces clinical pain and temporal summation in fibromyalgia patients⁹⁵. Temporal summation have been shown to

predict the development of acute postoperative pain in patients undergoing thoracotomy⁹⁶, which is a precursor for the development of chronic postoperative pain⁹⁷.

Conditioning pain modulation

Descending inhibitory inhibition and facilitation modulation of the peripheral nociceptive inputs in the dorsal horn neurons are important pain mechanisms which can cause spreading sensitization⁹⁰. CPM is a measure of the net effect of the facilitating and the inhibitory system⁹⁰ and can be induced by e.g. cold pressor test⁹⁸ or ischemic pain²⁶. Less efficient CPM has been shown in e.g. patients with temporomandibular disorder⁹⁹, fibromyalgia^{100,101}, OA^{24,26,49} and chronic tension-type headache¹⁰². The major neurotransmitters involved in descending inhibition are serotonin and norepinephrine and agents which boost these neurotransmitters will further inhibit pain perception¹⁰³. Such an agent could be duloxetine, which reduces knee pain in patients with KOA^{104,105}.

Preoperative CPM can predict the risk for development of postoperative chronic pain in patients undergoing thoracotomy¹⁰⁶, and shown to be a reliable bedside measurement in women with chronic pain¹⁰⁷.

Qualitative measurements of pain

Several qualitative measurements of pain have been established. The most famous measurements must be the visual analog scale (VAS) and the numerical rating scale (NRS). Pain reported using both scales have shown to be consistent¹⁰⁸. VAS has been shown useful in clinical research¹⁰⁹. While a simple measure of subjective pain intensity might be beneficial, several questionnaires to accompany pain ratings and/or QST has been developed. Listed in table 2 are four questionnaires that have been widely used in KOA research and focuses on symptoms, stiffness of the knee, pain, function and quality of life.

Reference	Questionnaire
Insall et al., 1989¹¹⁰	Knee Society Score (KSS)
Bellamy et al., 1986¹¹¹	Western Ontario and McMaster Universities Arthritis Index (WOMAC)
Roos et al., 1998¹¹²	Knee Injury and Osteoarthritis Outcome score (KOOS)
Hawker et al., 2008¹¹³	Osteoarthritis Research Society International (OARSI)

Table 2: Four questionnaires widely used in KOA research.

The KSS questionnaire was developed focusing on pain and mobility of the knee. The KOOS was developed as an extension of the WOMAC to evaluate short- and long-term symptoms and function in subjects with knee injury or osteoarthritis¹¹⁴. Moderate-to-strong correlations have been found between the KSS and the WOMAC's function and pain subscores¹¹⁵ and the KOOS have been shown to have increased validity and at least as responsive as the WOMAC¹¹⁶. The OARSI is a

combination of the WOMAC and KOOS and have strong correlations to both WOMAC and KOOS¹¹³.

Pain after surgery

Acute postoperative pain

Svensson et al., 2000¹¹⁷ showed that 43%, 27% and 16% of patients reported moderate to severe pain (VAS \geq 40) at rest and 88%, 81% and 72% reported moderate to severe pain at some point in the first, second, and third postoperative day respectively, after elective orthopedic, urological, upper gastrointestinal or endocrinological surgery. The severity of acute postoperative pain has been shown to correlate to the development of chronic postoperative pain¹¹⁸. Several guidelines to acute pain treatment have been introduced over the last decade^{117,119-121} but with limited results.

Pain after the acute postoperative phase

Thirty to fifty percent of patients undergoing amputation, mastectomy, thoracotomy or sternotomy still show persistent pain 3-6 months after surgery and 5-10% report severe pain^{97,118}. Approx. 9% and 5% of patients have been shown to report pain 3 and 6 months (not defined as chronic postoperative pain by IASP guidelines) after TKR surgery⁸², respectively. Inadequate acute postoperative pain may lead to the development of chronic postoperative pain¹¹⁸.

Chronic postoperative pain

Chronic pain is defined by IASP as present pain six months after surgery. Kehlet and colleagues summarized in 2006, that the prevalence of chronic postoperative pain for major surgeries, such as amputation, breast surgery, thoracotomy, coronary artery bypass and caesarean section, was as high as 50%¹¹⁸. There is an ongoing debate regarding the prevalence of chronic postoperative pain after TKR- and THR surgery but Beswich et al. 2012²⁰ concluded in a large meta-analysis that the overall proportion of chronic postoperative pain after TKR surgery was approx. 20% and 10% after THR surgery. Currently there is no definitive explanation to why some patients develop chronic postoperative pain while others have a pain free recovery. The transition from acute to chronic postoperative pain is not completely understood.

Risk factors of the development of chronic postoperative pain

Low age is linked with a more vigorous neoplastic response and gender differences have been shown in regards to pain modulation^{97,118,122-127}, why these are classified as risk factors for postoperative pain.

Kehlet et al., 2006¹¹⁸ concluded that surgical techniques that avoid nerve damage should be applied whenever possible, and that the intensity of acute postoperative pain correlated to the development of chronic postoperative pain. In addition, preoperative pain, higher analgesia consumption in the acute-operative phase and widespread hyperalgesia have been shown to be risk factors^{44,97,118,124-127}. Amputees with severe phantom limb pain have more often had intense and enduring preamputation pain than amputees with less intense phantom pain^{128,129}, and preoperative pain intensity before TKR has been shown to be a clinical predictor for development of chronic pain¹³⁰.

Catastrophizing is described as a maladaptive cognitive style employed by patients with anxiety and depression disorders (negative forecast of future events)¹³¹ and preoperative catastrophizing has been shown to be a risk factor for chronic postoperative pain¹³²⁻¹³⁶.

A recent study showed that pre and post TKR treatment with pregabalin seem to inhibit the development of chronic postoperative chronic neuropathic pain⁸² indicating that preoperative sensitization of the nerve system might be connected to the development of postoperative chronic pain. Preoperative central acting pain mechanisms have been shown to predict the development of chronic postoperative pain in patients undergoing e.g. thoracotomy^{96,106}. It seems evident that the nervous system becomes more sensitive if exposed to pain for a longer duration as KOA patients with higher pain and longer disease duration show spreading sensitization compared to healthy controls²⁶.

Pain after revision surgery

While most patients will have a pain free recovery, some patients develop chronic postoperative pain. 80-90% of re-TKR surgery in KOA patients are performed due to the assumption of pain, aseptic loosening, infection, instability and stiffness^{11,137,138}. Re-TKR surgery has a lower chance of success compared with primary TKR surgery¹³⁹ and is associated with a high risk of multiple re-TKR surgeries¹¹. Patients with pain after re-TKR surgery show widespread hyperalgesia, facilitated temporal summation and lower CPM compared with patients with no pain after re-TKR surgery²⁵. Facilitated temporal summation is more predominant in patients with widespread hyperalgesia after re-TKR surgery compared to KOA patients before primary TKR surgery⁸³. This indicates a continued nociceptive drive, despite the removal of the OA affected joint, further indicating that sensitization could play a key role in the chronification of postoperative pain and suggests that sensitization should be considered before re-TKR surgery.

Aim and overview of the PhD project

This PhD project aimed to 1) increase the understanding of the prevalence of chronic postoperative after primary and revision TKR surgery, 2) link preoperative sensitization to chronic postoperative pain and 3) describe the influence of synovitis on sensitization. Three main scientific questions were asked in the initial phase of the PhD project:

1. What is the incidence of chronic postoperative pain after primary/revision TKR surgery (study I)?
2. Can preoperative parameters describe postoperative outcomes (study II)?
3. What influence do synovitis in the knee have on sensitization (study III)?

To answer these questions, three clinical studies were initiated. Figure 3 illustrates the connection between the three studies.

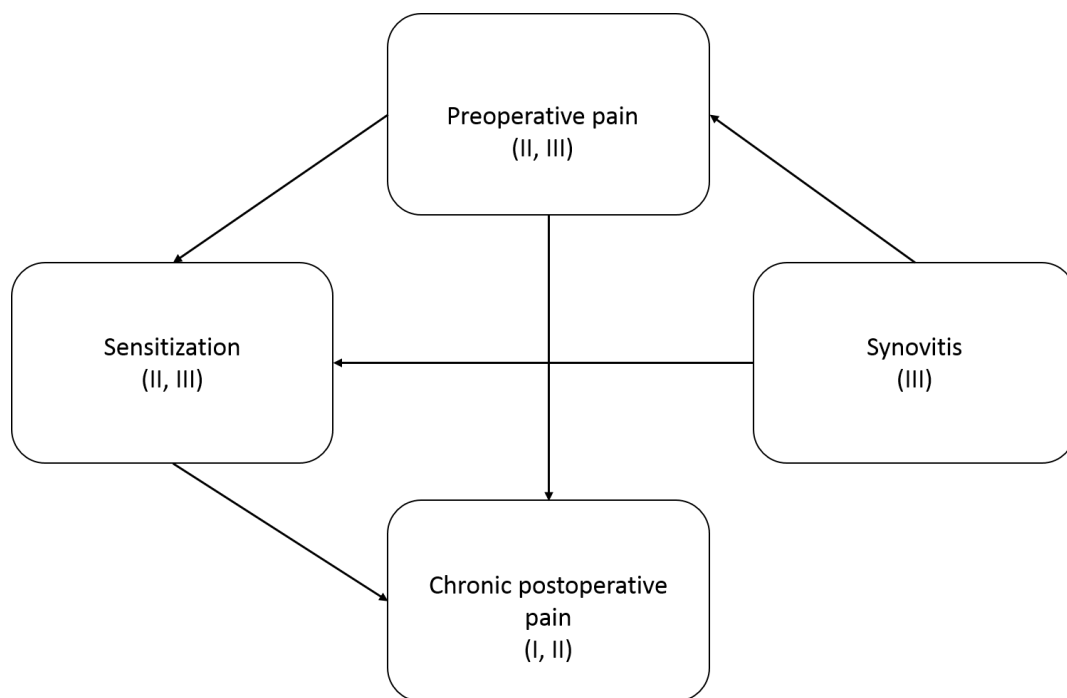


Figure 3: This PhD thesis is derived from three studies including the prevalence of chronic postoperative pain (study I and II), preoperative sensitization (study II and III), the influence of synovitis on sensitization (study III) and the link between preoperative sensitization and development of chronic postoperative pain.

Methodological considerations

The following chapter will describe the methods applied in the 3 studies and argumentation for why the specific methods were chosen.

Protocols

Table 3 gives an overview of the different protocols, which were applied in this PhD project

	Protocol	Subjects
Study I	KSS function score	- 215 KOA patients pre- and post-primary
	OARSI QoL score	TKR surgery
	Categorical pain rating	- 90 KOA patients pre- and post-revision
	VAS	TKR surgery
Study II	PPTs	- 77 KOA patients pre- and post-primary
	CPM	TKR surgery
	Temporal summation	
	VAS	
Study III	PPTs	- 58 KOA patients pre-primary TKR
	MRI (BLOKS)	surgery.
	Serological biomarkers	- 33 controls
	VAS	

Table 3: An overview the protocols and the subjects enrolled for the three studies for the PhD project.

Sample size calculation and statistical reflections

Statistical analysis were performed in IBM SPSS Statistics, version 19.

Study I

Study I aimed to obtain a broad perspective of the incidence of chronic postoperative pain after primary and revision TKA, why a cohort design was chosen. All patients undergoing primary or revision TKR surgery during 2004-2005 in the Northern Region of Denmark were invited to join the study. No sample size calculation was applied in this study, due to nature of a cohort design.

Data were normally distributed, why Pearson correlations and t-tests were applied in the data analysis. The data contained several categorical measures (from the questionnaires) where binary logistic regressions were applied.

Study II

Graven-Nielsen et al., 2010²⁴ showed that patients after TKR surgery had a mean VAS of 2.6 (SD: 0.5). The study aimed to detect a change of at least 30%, with a power of 80% and a significant level at 0.05. Based on a power calculation a total number of patients needed were calculated to 10 patients (rounded off from 9.2 patients). Based on the data available at the study start, Harden et al., 2003¹⁹ showed that the risk of chronic pain after TKR surgery was 13%, why the total amount of patients needed for examination was at least 77 patients (rounded off from 76.9).

Data were normally distributed, why t-test, Pearson correlations and analysis of variance (ANOVA) were applied.

Study III

A pilot study was performed prior to the study and found that TKR patients had an average PPT around the knee of 418 (SD: 180). The study aimed to detect a change of at least 25%, with a power of 80% and a significant level at 0.05. Based on our power equation, a total of 59.3 patients were needed, why we invited 60 patients to join the study. Two patients did not complete all examinations and were excluded from the data analysis.

The serological biomarkers were not normally distributed, why these were log transformed to achieve normally distribution. Pearson correlations and repeated measure ANOVAs were applied.

Questionnaires

KSS questionnaire was developed by Insall et al.¹¹⁰ in 1989. While the KSS gives a limited insight into the patient's pain, the questionnaire was chosen since this is used in the Danish Knee Arthroplasty Registry and thus every patients undergoing TKR surgery in Denmark since 1997 will have data from this score. Study I used this registry combined with the OARSI questionnaire for quality of life (QoL) to give insights into the prevalence for chronic pain after primary and revision TKR surgery. Moderate-to-strong correlations have been found between the KSS and the WOMAC function and pain subscores¹¹⁵. While the KOOS has been shown to be as good or even superior to the WOMAC¹¹⁶ and should be applied when feasible, the current study was limited to the KSS due to the reason described above.

Pain

For an easy overall pain intensity rating, the visual analog scale (VAS) was applied (study I, II and III), zero on the 100 mm line was anchored as "no pain" whereas the high end was anchored as "worst pain imaginable". The scale has been proven useful in clinical trials and in experimental pain conditions¹⁰⁹. Correlations have been shown between categorical pain ratings (e.g. none, mild, moderate and severe) and the VAS^{140,141} and an attempt to define moderate pain have been shown to be above 30 mm and severe pain to be above 54 mm on the 100 mm VAS¹⁴².

Correlations between the worst pain within the last 24 hours and sensitivity profiles of patients with KOA have previously been reported^{24,26}, why this was chosen for the current project (study I, II and III). In addition, categorical measures of pain as mild, moderate, severe or unbearable was applied in study I.

Quantitative sensory testing

QST is a relevant assessment tool for patients with musculoskeletal pain⁶³ and PPT (study II and III), CPM (study II) and temporal summation (study II) have been widely used in research of underlying pain mechanisms in KOA^{12,24-26,74}. While comparison with the previous literature is

essential, preoperative QST parameters have shown to have a prognostic value for the outcome after surgery^{96,106,143}.

Arendt-Nielsen et al., 2010²⁶ defined eight test sites in the peripatellar region for PPT, which have been applied (excluding the test site at the center of patella) using a standardized handheld pressure algometry (Somedic Algometer, Sweden).

Temporal summation can be applied using electrical¹⁴⁴, computerized algometers²⁴⁻²⁶ or a modified Von Frey filament¹⁴⁵. Stimulations should be applied with an inter-stimuli interval of at least 0.3 Hz^{146,147}. A modified Von Frey filament (Aalborg University, Denmark) was used in this project, due to the easy clinical instruction and application. The modified Von Frey filament is a newly developed device, why only a single study in KOA patients have been published so far¹⁴⁸.

CPM is based around the concept of “pain inhibits pain” and can be induced by e.g. the cold pressor test⁹⁸ or ischemic pain²⁶ to a remote site (conditioning pain stimulus) from the actual pain site e.g. the painful knee in knee OA. The cold pressor test was chosen for the tonic painful conditioning stimulus as it is very painful, simply to apply and validated in the literature¹⁴⁹⁻¹⁵². The conditioning pain was applied to the upper extremities (the hand). For test stimulus before and after cold pressor test, the pressure pain threshold was applied.

Alternatives to the applied measures for the current study could be electrical or thermal stimuli. Electrical stimuli have been used to study modifications of the synaptic strength (synaptic long-term potential), believed to be involved in the transformation from acute to chronic pain^{43,153-155}. In addition, electrical stimulations can be used to study the lower limb reflex, which has been studied in humans and is believed to be an objective measure of nociceptive processing in the central nervous system¹⁵⁶. The method can detect central sensitization in patients compared to controls^{157,158} and a prediction model, based on statistical properties of the EMG signal, has shown promising results to further instigation of the difference in the central sensitization between controls and patients¹⁵⁹. Patients with hip OA have shown thermal sensory abnormalities when comparing before and after THA surgery⁷² and when comparing patients with different neuropathic pain syndroms¹⁶⁰. Recently, a study showed thermal and mechanical hyperalgesia in KOA patients with high pain and low radiological OA (K&L2) compared to patients with low pain and high radiological OA²².

Synovitis

Synovitis can be diagnosed both with and without the use of contrast-enhanced magnetic resonance imaging (MRI)¹⁶¹. Seventy-three percent of KOA patients have been reported to have synovitis¹⁶². Synovitis is defined as inflammation of the synovial membrane and is believed to contribute to the pain experience by KOA patients¹⁶³. The synovial membrane is filled with nociceptive fibers, hence inflammation of this tissue is considered to be painful^{31,32}. Two standardized MRI protocols for assessing symptomatic KOA is The Boston-Leeds OA Knee Score (BLOKS)¹⁶⁴ and the Whole-Organ MRI Score (WORMS)¹⁶⁵ without the use of contrast-enhanced

MRI. When comparing the two systems, BLOKS identifies meniscal abnormalities best¹⁶⁶, while WOMMS is better for bone marrow lesions¹⁶⁶ but detection of synovitis is similar for both methods^{166,167}. The progression in synovitis thickening has been reported to be correlated with increasing pain¹⁶⁸ and KOA patients who report knee pain have more severe synovitis compared to patients without knee pain, which further indicates that synovitis could contribute to KOA pain¹⁶³.

Understanding the underlying mechanisms of pain in KOA is crucial to improve the diagnostic options for KOA patients. Study III focused on the contribution of pain arising from the synovial membrane in the corpus Hoffa area, however, several future studies should investigate the pain contribution from e.g. subchondral bone, periosteum or fat pad, since these structures do include nociceptive fibers^{4,28} and hence could contribute to the pain experienced by KOA patients.

Serological biomarkers

Synovitis and bone remodeling biomarkers have been established, as contributors to the joint pain¹⁶⁹.

The synovial membrane consists of type I and III collagen^{170,171}. During inflammation, the synovial membrane undergoes fibrogenesis, why markers of type I or III collagen turnover could reflect the severity of synovitis. Several studies have shown increased levels of matrix metalloproteinase (MMP) derived degradation products of type I and type III collagen (C1M and C3M) in rheumatoid arthritis¹⁷²⁻¹⁷⁴ and C1M is increased in patients with end-stage OA²¹. C1M is not a biomarker of bone degradation as the fragment generated by MMPs is further degraded by cathepsin K, the most abundant protease in bone.

The synovial membrane is densely packed with nociceptive fibers^{4,28} and it is believed that inflammation and degeneration could alter pain perception from the joint^{31,32}. A MMP-derived fragment of type II collagen, C2M, reflects cartilage degradation and is elevated in patients with radiographic KOA¹⁷⁵, ankylosing spondylitis¹⁷² and rheumatoid arthritis^{172,173}. Biomarkers of inflammation is currently used to assess the extent of inflammation and furthermore diagnose chronic inflammatory diseases, such as rheumatoid arthritis. A recent study showed that C-reactive protein (CRP) was elevated in KOA patient and CRP correlated with PPTs⁷³, indicating that inflammation could play a role in sensitization. High sensitive CRP (hsCRP) is elevated in the later stages of OA compared to earlier stages²¹ and is a sensitive biomarker of acute and systemic inflammation¹⁷⁶, whereas the MMP-derived fragment of CRP (CRPM) seems to be a sensitive marker of local tissue inflammation¹⁷⁷. Hence, CRPM could be a more disease related measure of chronic inflammation than hsCRP and could reflect synovitis.

Arendt-Nielsen et al., 2013¹⁷⁸ showed associations between sensitization paradigms and serological biomarkers showing that CPM and temporal summation was associated with local and systemic inflammation. QST is dependent on expert knowledge for interpretation and is highly time consuming. Blood samples is often used in the clinical to give a fast insight to patient specific diseases, why this correlations between sensitization and serological biomarkers are highly

interesting. Study III aimed to investigate if serological biomarkers could substitute CPM and temporal summation in patients with synovitis, known to contribute to the OA pain¹⁶³, why these serological biomarkers were chosen.

Knee osteoarthritis as a model for the development of chronic postoperative pain

While the sensitization profiles and the associated incidence of chronic postoperative after TKR surgery is an important factor to consider for KOA patients, the OA model including the sensitization profiles and outcomes after surgery have the potential to be translated into other musculoskeletal pain conditions. Commonly KOA is associated with many comorbidities¹⁷⁹⁻¹⁸³, why each of these should be investigated to understand the underlying pain mechanisms. While the sensory profiles KOA patients cannot be directly translated into other specific diseases, this gives an insight to the neuroplasticity of the human.

Pre- and postoperative pain in knee osteoarthritis

The following chapter focuses on the results of the PhD project. Please refer to appendix 1 for a quick insight to the key results.

Prevalence of postoperative pain

The current PhD project has provided insight to the pain pre- (study II and III) and postoperatively (study I and II) in patients with severe KOA undergoing primary and revision TKR surgery.

Combining the three studies, an overall primary preoperative pain (study II and III, N=136) intensity of VAS=7.1 (95% CI: 6.6-7.5) and an overall postoperative pain intensity (study I and II, N=293) of VAS=1.4 (95% CI: 0.8-1.9) was found.

Twelve months after primary TKR surgery, 22% of the patients report VAS>3 (study II), indicating at least moderate pain¹⁴² and three years after primary TKR surgery, 19% of patients report severe to unbearable on a categorical pain scale. Beswich et al., 2012²⁰ concluded in a meta-analysis that the risk of chronic postoperative pain after TKR surgery was approx. 20%, ranging from 10% to 34%, and approx. 10%, ranging from 7% to 23%, for THR surgery. The definition of intensity of chronic postoperative pain is vague, why different outcome can be seen after surgery depending on the intensity of the postoperative pain. Table 4 summarizes chronic postoperative pain from study I and II (N=293) as mild or higher (VAS>10), moderate or higher (VAS>40), severe or higher (VAS>60) and unbearable (VAS=100). Several very different clinical conclusions can be drawn from table 4, which either promotes or hampers the postoperative chronic pain problem, why a standardized measure for postoperative chronic pain should be applied.

Postoperative pain category	Prevalence	
	2 months after surgery*	1-3 years after surgery**
Mild or higher (VAS>10)	56.2 %	49.1 %
Moderate or higher (VAS>40)	26.7 %	29.4 %
Severe or higher (VAS>60)	9.5 %	10.9 %
Unbearable (VAS=100)	1.0 %	0 %

Table 4: Postoperative pain categorized as mild, moderate, severe or unbearable. * Sample size from study II (N=78). ** Sample size from study I and II (N=293).

When re-TKR surgery is performed, almost 50% of the patients will experience severe to unbearable pain (study I) and these patients have widespread hyperalgesia, facilitated temporal summation and lower CPM compared with patients with no pain after re-TKR surgery²⁵. In

addition, re-TKR surgery is associated with postoperative decrease in mobility and quality of life compared with primary TKR surgery (study I), indicating that a careful selection of patients for revision surgery should be implemented.

Sensitization

Knee osteoarthritis patients in general

The following results in this section are from pooling all patient data from study II. These results have not been published but are shown here to emphasize the importance of subgrouping KOA patients.

Pooling data from study II showed that in general KOA patients have lower preoperative PPTs at the knee, lower leg and arm compared to postoperative (figure 4) indicating preoperative widespread hyperalgesia and normalization after joint replacement, which is consistent with previous literature²⁴. General conditioning pain modulation shows that KOA patients have a pre- and postoperative functional inhibitory system (figure 5) comparing baseline PPTs to PPTs after the cold pressor test ($P < 0.05$), challenging the current literature on preoperative dysfunctional inhibitory pain modulation^{24,72}. General temporal summation shows no significant difference between time points (figure 6), again challenging the current literature²⁴; however, revealed large standard deviations, which could suggest that some patients have high and some have low facilitated temporal summation.

Subdivision of knee osteoarthritis patients

Dividing patients in study II into groups of patients with low and high postoperative pain 12 months after TKR surgery showed that patients who have low pain after surgery have an increased PPTs post TKR surgery compared to pre TKR surgery indicating normalization, which was not true for patients who have high pain 12 months after TKR surgery (study II). Patients with high pain after surgery had a dysfunctional inhibitory pain system, whereas patients with low pain after surgery had a pre- and postoperatively functional inhibitory pain system (study II). Patients with high pain after TKR surgery had facilitated temporal summation pre- and 12 months post TKR surgery compared to patients who have low pain after TKR surgery (study II).

Graven-Nielsen and Arendt-Nielsen, 2010⁸⁵ hypothesized that central sensitization is initially sustained by a peripheral drive (the pain from KOA) and if removed the central sensitization would perish. The findings in the current project indicate that the majority of patients (the low pain group from study II) will have a normal recovery phase and the removal of the peripheral drive will normalize the sensitization. Subgrouping of patients revealed that approx. 22% (the high pain group from study II) of the patients did not have normalization of widespread hyperalgesia or decrease in facilitated temporal summation 12 months after TKR surgery (study II). The high pain group has had the peripheral drive removed but demonstrated postoperative central sensitization, indicating that other factors are involved in maintaining the sensitization. The current findings

underline the importance of subgrouping of KOA patients before TKR surgery and suggests a multimodal treatment approach.

Subdividing patients according to the presents of synovitis showed that patients without synovitis compared to patients with moderate-to-severe degree of synovitis showed similar preoperative PPTs, which were lower compared to controls (study III).

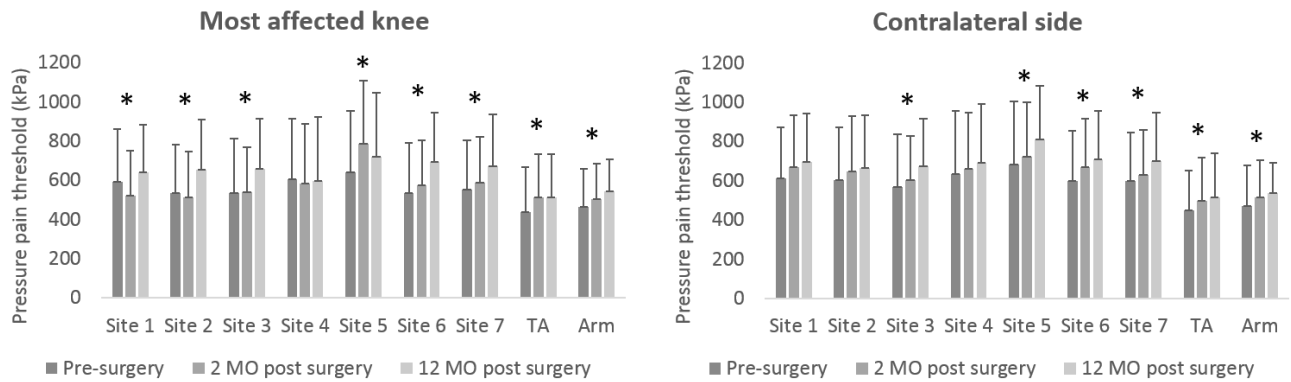


Figure 4: Knee osteoarthritis patients have decreased preoperative PPTs compared to 12 months after surgery, indicating a normalization. * indicates $P < 0.05$. Data from study II before subgrouping of patients.

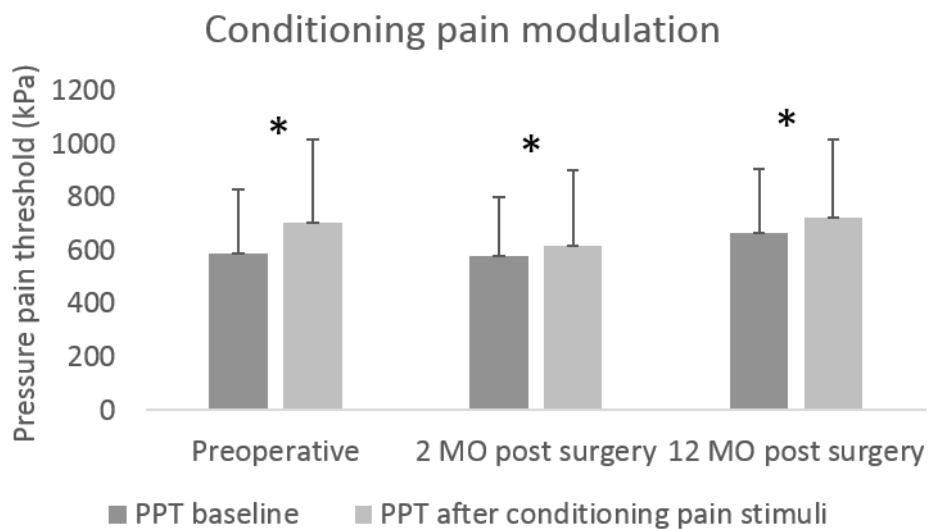


Figure 5: Knee osteoarthritis patients have functional inhibitory pain system. * indicates $P < 0.05$. Data from study II before subgrouping of patients.

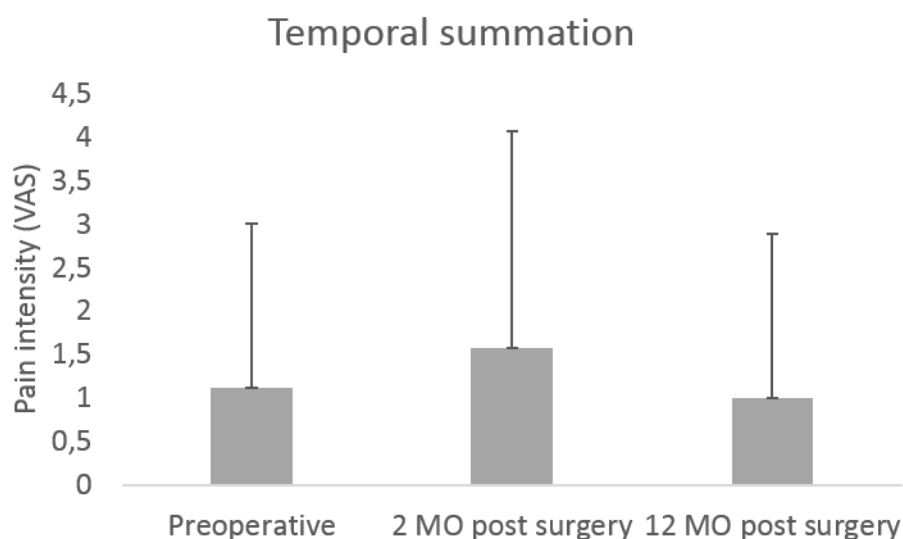


Figure 6: Facilitated temporal summation does not change comparing pre- and postoperatively in knee osteoarthritis patients. Data from study II before subgrouping of patients.

Link between preoperative sensitization and postoperative chronic pain

Administration of preoperative and postoperative pregabalin reduces the development of chronic postoperative neuropathic pain⁸² and preoperative administration of duloxetine decreases the acute postoperative pain after TKR surgery¹⁰⁵, indicating that sensitization of the nervous system is involved in the development of postoperative pain. Preoperative CPM has been shown to predict the risk for development of postoperative chronic pain¹⁰⁶ and the effect of duloxetine¹⁸⁴. Temporal summation have shown to predict the acute postoperative pain⁹⁶ in patients undergoing thoracotomy, which furthermore indicates that sensitization of the nervous system is linked to the development of postoperative pain.

The current PhD project showed a correlation between preoperative temporal summation and postoperative pain 12 months after surgery (study II), which furthermore links preoperative sensitization to the development of postoperative chronic pain.

Synovitis and osteoarthritis

The synovial membrane and the corpus Hoffa fat pad are densely packed with nociceptive fibers^{4,28}, why inflammation of these structures is believed to be associated with pain¹⁸⁵. In KOA patients, 73% of the population is reported to be diagnosed with synovitis¹⁶², why synovitis has been of interest in the recent years. There is an ongoing debate in the literature regarding if synovitis increases the pain perception in KOA patients. Synovitis can be assessed by either contrast or non-contrast enhanced MRI¹⁶¹. Hill et al., 2007¹⁶⁸ using non-contrast enhanced MRI, found no correlations between synovitis and pain but found a weak correlation between the progression of synovitis and pain. Baker et al., 2010¹⁶³ using contrast enhanced MRI, showed that patients with synovitis have increased pain compared to patients without synovitis. Finally, Yusuf et al., 2011¹⁸⁵ concluded in a review, that synovitis is associated with pain in KOA patients. These inconsistent results could be due to the different MRI scanning techniques.

The current project, did not find any associations between pain intensity and the degree of synovitis using the BLOKS for the corpus Hoffa fat pad (study III). Pain in KOA can arise from several structures, such as the subchondral bone or the periosteum^{4,28}, why these could be the focus of future research.

Study III focused on synovitis of the corpus Hoffa fat pad, as an estimate for synovitis of the whole knee joint, which could limit the results and the interpretation of this study. In addition, controls for study III were not MRI scanned, since these were believed to be synovitis free. A recent population study showed that 37% of subjects without diagnosed KOA have MRI categorized synovitis, which further limits the results of study III.

Serological biomarkers in osteoarthritis

The current project used five serological biomarkers; C1M, C2M, C3M, hsCRP and CRPM.

Serological biomarkers for degeneration of collagen type I, II and III and inflammation and pain sensitization have been associated recently¹⁷⁸. This thesis showed that patients with moderate-to-high grade of synovitis are more sensitized than controls and that these patients have increased C1M, C2M and hsCRP compared to controls, which further indicates that KOA is linked to both sensitization and changes in serological biomarkers, however, a significant correlation could not be demonstrated in the current project (study III).

Type I collagen - C1M

Bone type I collagen is mainly resorbed by cathepsin K resulting in the release of bone-specific neo-epitopes, such as CTX-I and NTX-I¹⁸⁶. In contrast to CTX-I, the C1M neo-epitope is generated by MMP, but destroyed by cathepsin K¹⁸⁷, why the C1M is a marker of connective tissues other than calcified bone. High C1M levels are associated with reduced PPTs assessed from the knee (localized joint hyperalgesia)¹⁷⁸. In addition, C1M is elevated in arthritic animal models¹⁷³ and in patients with rheumatoid arthritis¹⁷⁴, which is also reported in the current project (study III).

Type II collagen - C2M

Degradation of type II collagen and cartilage destruction are well established in OA¹⁸⁸. C2M is found to be significantly elevated in OA patients with late stage OA (KL3-4) compared with patients with early stage OA (KL1-2) and controls¹⁷⁵. In the present study none of the experimental pain parameters were associated with C2M (study III).

An ongoing debate in the recent literature focuses on synovitis' influence on increase of cartilage loss. Synovitis is assumed to be associated with increased risk of fast cartilage degeneration¹⁸⁹; however, no C2M increase was found in patients with different degrees of KOA¹⁷⁸ and Hill *et al.*, 2007¹⁶⁸ reported that synovitis was associated with pain but not loss in cartilage. Study III found that patients with and without synovitis of the corpus Hoffa fat pad had increased degeneration of cartilage (increased levels of C2M) compared to controls, which could indicate that synovitis and increased cartilage degeneration are not connected.

Type III collagen – C3M

Synovitis plays a role in OA pain and worsening of synovitis and effusions are associated with increased pain¹⁹⁰. The synovial membrane is mainly composed of type III collagen. A combination of elevated expression and the presence of MMPs leads to the release of MMP generated fragments of type III collagen¹⁷³. A recent study found that elevated C3M and CRPM levels are associated with impaired descending modulation and spreading sensitization¹⁷⁸. C3M and CRPM correlated strongly, possibly due to the increased tissue turnover driven by local inflammation as synovitis¹⁹¹. Study III did not find an increased C3M level comparing patients with or without synovitis, but showed higher C3M levels to be higher in controls. An increased fibrogenesis of the synovial membrane is part of the synovitis; hence in the thickening of the synovial membrane is

the result of an overexpression type III collagen shifting the turnover balance toward formation instead of degradation, which partly could explain the findings from study III.

Inflammation – hsCRP and CRPM

CRP as an indicator for acute inflammatory¹⁹² has limited value in monitoring inflammation in OA¹⁹³. The hsCRP is a marker for low grade systemic inflammation, which correlates with pain severity in OA when assessed on a VAS¹⁹⁴. Recently, an association between hsCRP levels and localized and spreading sensitization was documented in KOA patients¹⁷⁸. Study III found that hsCRP levels were increased in both KOA with and without synovitis although not correlated with pain intensity. In addition, there was a trend for higher levels of hsCRP in patients with moderate-to-severe grades of synovitis.

CRP could indirectly reflect synovitis in OA¹⁹¹. Degraded cartilage fragments cause the synovial cells to produce inflammatory mediators, which further increases the synthesis of inflammatory cytokines and MMPs by the synovial cells¹⁹⁵. When CRP binds to its receptors, it will gradually be degraded by proteolytical enzymes and released as fragments into the surrounding fluids (initially to e.g. the synovial fluid and later to the blood)¹⁹⁶ and can be measured by CRPM¹⁷⁷.

CRPM is suggested as a measure of chronic inflammation in contrast to the acute inflammation of circulating CRP, which could act as a reflection of longer lasting chronic inflammatory stage in OA. A recent study showed CRPM to be elevated in the patients with facilitated temporal summation and decreased pain modulation¹⁷⁸. Study III showed a non-significant trend towards increased levels of CRPM in KOA patients with and without synovitis compared to controls.

Limitation of systemic biomarkers

Life style changing parameters gender, BMI and age can have an influence on serological biomarkers, especially inflammation biomarkers^{197,198}, why analysis should be adjusted for these, as in study III. Some of the literature reviewed in this thesis, regarding serological biomarkers, is unadjusted for life style parameters, why interpretation of these studies should be cautious.

Systemic biomarkers, as these applied in this PhD project, is often criticized due to the problematic source of tissue degeneration. The currently applied serological biomarkers seems not to be sufficient specific or sensitive to be used in phenotyping OA patients with or without synovitis. OA is often localized and affecting only one joint, why Felson, 2014¹⁹⁹ suggested that biomarkers from synovial fluid could contain more diagnostic information regarding the joint of interest.

Recommendations for clinical implications

Several risk factors for chronic postoperative pain have been identified, as listed in the introduction section. The current chapter will focus on a clinical review for preoperative evaluations, which could lead to a decrease of patients developing chronic postoperative pain after TKR surgery.

Preoperative screening of sensory profile

Several studies suggest that KOA patients are sensitized before TKR surgery^{12,24-26,74} and normalized after TKR surgery²⁴. The data presented in this PhD project suggests that KOA patients cannot be diagnosed as one patient group but should be subdivided. This is supported by several recent studies^{21,22}, yielding a large percentage of the KOA patients with a normal recovery phase and a smaller percentage who have continued widespread hyperalgesia, facilitated temporal summation and decreased pain inhibition, which could explain why these patients have continued pain 12 months after surgery (study II).

As described earlier, drugs designed to block the NMDA receptors have shown decrease facilitated temporal summation^{93,94} and drugs who promote the reuptake serotonin and norepinephrine have shown to increase descending pain inhibition¹⁰³, which reduces knee pain in patients with KOA^{104,105}. While these drugs are available, the current selection of drugs is limited, which could explain why central sensitized pain syndromes are often difficult to treat¹⁰³. Preoperative QST screen would enable an easier selection for which patients should be offered drug therapies.

Opioids can combat pain immediately but there is no evidence for these to have an effect on the central pain states; however, some evidence suggest that patients can develop opioid-induced hyperalgesia, which can worsen the patient¹⁰³. Ketamine and pregabalin/gabapentin have been used to combat central sensitization. Ketamine is used to decrease facilitated temporal summation⁹⁵, preoperative temporal summation has shown to predict the postoperative outcome of pregabalin¹⁴³ and preoperative pregabalin has been shown to reduce the incidence of chronic postoperative pain the KOA patients after TKR surgery⁸². In addition, CPM has shown to predict the outcome of duloxetine¹⁸⁴, which if administrated preoperatively will decrease the acute postoperative pain in KOA patients¹⁰⁴. KOA patients are often presented with a combination of both facilitating and inhibitory problems, why a combination of drugs, based on preoperative QST screening, should be applied in this patient group. Preoperative selection of patients for drug therapy is important, since some drugs are linked to severe side effects.

Opioid treatment often associated with several adverse events and long time use can lead to addiction and opioid craving²⁰⁰, which is associated with pain catastrophizing²⁰¹. Some studies have documented that rapid opioid escalation can lead to hyperalgesia^{202,203}. Ketamine has been shown to combat facilitated temporal summation; however, prescription of ketamine is associated with several adverse events^{204,205}. Pregabalin is presented with minor adverse events and well tolerated in patients²⁰⁶. A recent study suggested that duloxetine can reduce knee pain and the

treatment is related with minor adverse events¹⁰⁵. Based on the patients preoperative sensory profile a combination of drugs could be administrated to counter the sensory abnormalities, which could lead to a lower incidence of chronic postoperative pain. Pregabalin and duloxetine have shown to have the least amount of severe adverse events, why these are recommended for clinical use. It is hypothesized, that pre-emptive administration decreases postoperative pain intensities, decreases hyperalgesia and prevents central sensitization compared to drugs administrated after surgery^{207,208}, why pre-emptive administration is recommended. In addition, duloxetine is an antidepressant drug²⁰⁹ and pain catastrophizing and depression are listed as preoperative risk factors for the development of postoperative pain¹³²⁻¹³⁶, why duloxetine could improve both the sensory and the depression aspects of the pain.

Patients who develop chronic postoperative pain after primary TKR surgery, should carefully be selected for revision TKR surgery, since these patients have a high risk of continued pain, poor quality of life, widespread hyperalgesia and facilitated temporal summation^{25,83} (study III). Revision TKR surgery on the indication of pain alone, is not recommended.

Conclusive remarks

The work presented in this thesis highlights the severity of chronic pain after primary total knee replacement. While most patients will have a pain free postoperative recovery, this thesis showed that approx. 10-50% of patients, depending on the intensity of pain, will experience pain one year after surgery. As shown in other patient groups e.g. patients undergoing thoracotomy, preoperative sensitization of the nervous system can be linked to chronic postoperative pain. This thesis focused on preoperative subgrouping of patients to minimize the risk of development of chronic postoperative pain. The work presented in this thesis, found associations between preoperative sensitization and postoperative chronic pain in patients with knee osteoarthritis before total knee replacement. Patients who develop chronic postoperative pain after primary TKR surgery have a high risk of poor outcome after revision total knee replacement, why revision surgery should be performed with care.

With the increasing number of patients to treat with TKA, the demand for more surgical procedures and the high risk of development of chronic postoperative pain, the focus of future research should aim to identify preoperative measures for which patients are in risk of developing chronic postoperative pain. An unimodal diagnoses approach only involving a simple pain rating and an X-ray image and treating patients uniformly, will cause a continuum in the of the chronic postoperative pain problem. A multimodal approach, involving preoperative QST screening to subdivide patients, is recommended.

Today, QST is only utilized in smaller research focused studies, which some scientific results. An approach to combat and accelerate the knowledge of postoperative pain, which will lead to better diagnosis, is to agree upon a clinical consensus of implementing preoperative screening for sensitization in patients with severe knee osteoarthritis. Based on the literature reviewed for this thesis, several other surgical procedures would also benefit from implementation of preoperative QST screening.

Dansk sammenfatning

Denne afhandling understreger vigtigheden i det voksende problem med kroniske smerter efter total knæ alloplastik. Størstedelen af patienter vil have et smertefrit postoperativt forløb, dog har denne afhandling vist at ca. 10-50% af patienter, afhængig af smerteintensitet, vil opleve kroniske smerte et år efter operation. Tidligere studier har vist præ-operative sensibilisering af nervesystemet kan forudse hvilke patienter som er i risiko for at udvikle postoperative smerter f.eks. hos patienter som gennemgår thorakotomi. Denne afhandling fokuserede på præ-operative sub-gruppering af patienter, for at minimere udviklingen af kroniske postoperative smerter. Denne afhandling fandt en sammenhæng mellem præ-operativ sensibilisering af nervesystemet og udviklingen af kroniske postoperative smerter for patienter som gennemgik total knæ alloplastik. Endvidere, viste resultaterne at patienter som udvikler kroniske smerter efter primær total knæ alloplastik har en høj risiko for et dårligt resultat, hvis disse tilbydes revisionsoperation, hvorfor revisionspatienter skal udvælges med omhyggelighed.

Det anbefales at den fremtidige forskning fokuserer på, at udvikle metoder til at forudsige hvilke patienter der har højere risiko for at udvikle kroniske postoperative smerter, grundet at antallet af knæ alloplastik operationer vil stige i de kommende år, samt den høje risiko for udvikling af kroniske smerter efter operation. Forsættes den traditionelle simple unimodal diagnose, kun indeholdende røntgen og en smerte score, vil det kroniske postoperative smerte problem fortsætte. Det anbefales at indføre en multimodal screening diagnostik, indeholdende kvantitativ sensorisk målediagnostik, for at imødekomme problemet.

I dag anvendes kvantitativ sensoriske målediagnostik kun i begrænsede forskningsstudier, med begrænsede resultater. Det anbefales at der indgås en klinisk konsensus for indførelsen af kvantitativ sensorisk målediagnostik som rutine for at øge viden omkring præ-operative screening og postoperative smerter, hvilket vil føre til bedre behandlinger og dermed mindske risikoen for kroniske postoperative smerter for patienter som gennemgår total knæ alloplastik. Baseret på litteraturen som danner grundlag for denne afhandling, antages det at flere andre operative indgreb vil drage fordel af samme tilgang.

English summery

An estimated 500 million working days are lost in Europe each year due to chronic pain, of which 1 million workdays are lost in Denmark. Higher demand for more efficient drugs and medical devices for pain treatment thus continue to drive the pain management market. Therefore, technology enabling an improved diagnosis and as a result a more efficient and personalized treatment of chronic pain patients will have great perspectives.

It seems evident that preoperative sensitization of the nervous system holds prognostic information to if patients develop chronic postoperative pain. This thesis focused on the prevalence of chronic postoperative pain after total knee replacement (TKR) surgery in knee osteoarthritis (KOA) patients and to subgroup KOA patients using quantitative sensory testing (QST).

The work presented in this thesis highlights the severity of chronic pain after primary total knee replacement. While most patients will have a pain free postoperative recovery, this thesis showed that approx. 10-50% of patients, depending on the pain intensity, will experience pain one year after surgery. As shown in other patient groups e.g. patients undergoing thoracotomy, preoperative sensitization of the nervous system can be linked to chronic postoperative pain. This thesis focused on preoperative subgrouping of patients to minimize the risk of development of chronic postoperative pain. The work presented in this thesis, found associations between preoperative sensitization and postoperative chronic pain in patients with KOA before TKR. Patients who develop chronic postoperative pain after primary TKR surgery have a high risk of poor outcome after revision total knee replacement, why revision surgery should be performed with care.

Appendix 1: the PhD project at a glance

	Aim	Methods	Main outcome
Study I	Prevalence of chronic postoperative pain in patients scheduled for primary and revision TKR surgery.	Description of pain three years after TKR surgery.	19% of patients after primary and 47% of patients after revision TKR surgery experience severe to unbearable pain.
Study II	Link between preoperative QST parameters and chronic postoperative pain.	Preoperative, 2 months and 12 months postoperative PPTs, temporal summation, CPM and VAS measurements.	Patients who develop chronic postoperative pain have a different preoperative sensory profiles compared with patients who are pain free or have mild postoperative pain 12 months after TKR surgery.
Study III	Preoperative sensitization and serological biomarker profiles of patients with or without synovitis.	Preoperative blood sampling and PPTs. MRI scans of patients to obtain status on synovitis.	Different sensory and biomarker profiles can be described when dividing patients based on their synovitis status compared with controls.

Appendix 2: Literature review of QST measurements used in OA research

Study	Study population	Findings
O'Driscoll et al., 1974⁷⁵	Hip OA Patients: N=55 Controls: N=21	Mechanical hyperalgesia detected in hip OA patients compared to controls.
Farrell et al., 2000⁶⁷	Hand OA Patients: N=24	Provocation of movement pain is associated with a decrease in mechanical pain threshold in hand OA.
Kosek et al., 2000⁷²	Hip OA Patient: N=12	Increase in warmth detection, decreased in pressure pain, decrease cold pain thresholds are decreased before surgery and normalized after surgery in hip OA patients.
Kosek et al., 2000⁴⁹	Hip OA Patients: N=15 Controls: N=15	No preoperative change in pressure pain threshold comparing before and after heterotopic noxious conditioning stimulation but an increase after total hip replacement surgery, indicating a preoperative dysfunctional inhibitory system.
Wilder-Smith et al., 2001⁶⁸	Hip and knee OA Patients: N=61	Patients electrical pain tolerance threshold is increased postoperatively compared too preoperatively.
Hendiani et al., 2003⁷⁷	Mixed OA Patients: N=28 Controls: N=27	Increased innocuous mechanical sensation and decreased mechanical pain thresholds in patients with OA compared to controls.
France et al., 2004²¹¹	Knee OA Patients: N=132 (74 women)	Comparing post-menopausal women (with and without hormone treatment) and aged matched men showed no difference in pain ratings or electrical threshold or tolerance.
Moss et al., 2007²¹²	Knee OA Patients: N=38	Patients with KOA have local and widespread hyperalgesia. Joint mobilization decreased the local and widespread hyperalgesia.
Imamura et al. 2008⁶⁹	Knee OA Patients: N=62 Only women	Once central sensitization is present, the pain treatment should target the nervous system structures instead of anti-inflammatory agents only. Patients should be evaluated using PPT before surgery.
Lundblad et al., 2008⁷⁶	Knee OA Patients: N=69	The combination of preoperative high pain intensity and low electrical pain threshold does not preclude surgery but patients should be given information regarding risk of chronic postoperative pain.
Gwilym et al. 2010²¹³	Hip OA Patients: N=20 Controls: N=20	Increased activity with the periaqueductal gray matter (commonly associated with pain experience) is associated with cutaneous stimuli in referred pain areas.

Arendt-Nielsen et al., 2010²⁶	Knee OA Patients: N=48 Controls: N=24	Patients with severe knee OA have lower pressure pain thresholds and increased facilitated temporal summation compared with controls. Pain intensities correlated to the degree widespread hyperalgesia.
Lee et al., 2011⁷³	Knee OA Patients: N=26 Controls: N=33	Patients have widespread hyperalgesia compared with controls. CRP levels was correlated to widespread hyperalgesia, indicating an inflammatory response in knee OA patients may play a role in sensitivity.
Graven-Nielsen et al., 2012²⁴	Knee OA Patients: N=48 Controls: N=21	Widespread hyperalgesia, facilitated temporal summation and loss of CPM is present in preoperative knee OA patients compared to controls. These pain mechanisms are normalized after TKR surgery implying that these mechanisms are maintained due to a peripheral drive.
Kavchak et al. 2012⁷⁴	Knee OA Patients: N=16 Controls: N=16	Decrease PPTs, increased mechanical detection threshold and increased vibration thresholds was reported in patients compared to controls. Self-reported instability was associated with vibration thresholds suggesting that perceived instability may be a pain mediated in knee OA.
Vance et al., 2012²¹⁴	Knee OA Patients: N=75	PPT increased in patients with knee OA after transcutaneous electrical nerve stimulation (TENS). Sensory cutaneous pain mechanisms were unaffected.
Finan et al., 2013²²	Knee OA Patients: N=113	Central sensitization is predominant in knee OA patients with high pain intensity and absence of moderate-to-severe radiological OA.
Skou et al., 2013²⁵	Knee OA Patients: N=40	Patients with pain after re-TKR surgery have widespread hyperalgesia, facilitated temporal summation and impaired CPM compared to patients no pain after re-TKR surgery.
Skou et al., 2014⁸³	Knee OA Patients: N=73	Widespread hyperalgesia is more predominant in patients with high local knee hyperalgesia. Facilitated temporal summation is higher in re-TKR patients with pain compared to knee OA patients.

An overview of the important literature covering OA and sensitization of the nervous system.

References

1. Ahlback S. Osteoarthritis of the knee. A radiographic investigation. *Acta Radiol Diagn (Stockh)*. 1968;Suppl 277:7-72.
2. Kellgren J, Lawrence J. Radiological assessment of osteoarthritis. *Ann Rheum Dis*. 1957;16(4):494.
3. Dieppe PA, Lohmander LS. Pathogenesis and management of pain in osteoarthritis. *Lancet*. 2005;365(9463):965-973.
4. Felson DT. The sources of pain in knee osteoarthritis. *Curr Opin Rheumatol*. 2005;17(5):624-628.
5. Hannan MT, Felson DT, Pincus T. Analysis of the discordance between radiographic changes and knee pain in osteoarthritis of the knee. *J Rheumatol*. 2000;27(6):1513-1517.
6. Lanyon P, O'Reilly S, Jones A, Doherty M. Radiographic assessment of symptomatic knee osteoarthritis in the community: Definitions and normal joint space. *Ann Rheum Dis*. 1998;57(10):595-601.
7. McAlindon TE, Snow S, Cooper C, Dieppe PA. Radiographic patterns of osteoarthritis of the knee joint in the community: The importance of the patellofemoral joint. *Ann Rheum Dis*. 1992;51(7):844-849.
8. Petersson IF, Boegard T, Saxne T, Silman AJ, Svensson B. Radiographic osteoarthritis of the knee classified by the ahlback and kellgren & lawrence systems for the tibiofemoral joint in people aged 35-54 years with chronic knee pain. *Ann Rheum Dis*. 1997;56(8):493-496.
9. Peat G, McCarney R, Croft P. Knee pain and osteoarthritis in older adults: A review of community burden and current use of primary health care. *Ann Rheum Dis*. 2001;60(2):91-97.
10. Van Saase J, Van Romunde L, Cats A, Vandenbroucke J, Valkenburg H. Epidemiology of osteoarthritis: Zoetermeer survey. comparison of radiological osteoarthritis in a dutch population with that in 10 other populations. *Ann Rheum Dis*. 1989;48(4):271-280.
11. Davidson D, de Steiger R, Graves S, Tomkins A. Australian orthopaedic association national joint replacement register; hip and knee arthroplasty. Annual report. Adelaide, Australia: Australian Orthopaedic Association; 2010.
12. Bajaj P, Bajaj P, Graven-Nielsen T, Arendt-Nielsen L. Osteoarthritis and its association with muscle hyperalgesia: An experimental controlled study. *Pain*. 2001;93(2):107-114.

13. Brown EC,3rd, Clarke HD, Scuderi GR. The painful total knee arthroplasty: Diagnosis and management. *Orthopedics*. 2006;29(2):129-36.
14. Hochberg MC, Altman RD, April KT, et al. American college of rheumatology 2012 recommendations for the use of nonpharmacologic and pharmacologic therapies in osteoarthritis of the hand, hip, and knee. *Arthritis Care Res*. 2012;64(4):465-474.
15. Messier SP, Loeser RF, Miller GD, et al. Exercise and dietary weight loss in overweight and obese older adults with knee osteoarthritis: The arthritis, diet, and activity promotion trial. *Arthritis Rheum*. 2004;50(5):1501-1510.
16. Skou ST, Roos EM, Laursen MB, et al. Total knee replacement plus physical and medical therapy or treatment with physical and medical therapy alone: A randomised controlled trial in patients with knee osteoarthritis (the MEDIC-study). *BMC musculoskelet Dis*. 2012;13(1):67.
17. Den Ortopædiske Fællesdatabase. Dansk knæalloplastikregister årsrapport. Annual report, Århus, Denmark: 2012.
18. Kurtz S, Ong K, Lau M, Mowat F, Halpern. Projections of primary and revision hip and knee arthroplasty in the united states from 2005 to 2030. *J Bone Joint Surg Am*. 2007;89(4):780-785.
19. Harden RN, Bruehl S, Stanos S, et al. Prospective examination of pain-related and psychological predictors of CRPS-like phenomena following total knee arthroplasty: A preliminary study. *Pain*. 2003;106(3):393-400.
20. Beswick AD, Wylde V, Gooberman-Hill R, Blom A, Dieppe P. What proportion of patients report long-term pain after total hip or knee replacement for osteoarthritis? A systematic review of prospective studies in unselected patients. *BMJ Open*. 2012;2(1):e000435-2011-000435. Print 2012.
21. Siebuhr A, Petersen KK, Arendt-Nielsen L, et al. Identification and characterisation of osteoarthritis patients with inflammation derived tissue turnover. *Osteoarthritis Cartilage*. 2013.
22. Finan PH, Buenaver LF, Bounds SC, et al. Discordance between pain and radiographic severity in knee osteoarthritis: Findings from quantitative sensory testing of central sensitization. *Arthritis Rheum*. 2013;65(2):363-372.
23. Dieppe P. Developments in osteoarthritis. *Rheumatology*. 2011;50(2):245-247.

24. Graven-Nielsen T, Wodehouse T, Langford R, Arendt-Nielsen L, Kidd B. Normalisation of widespread hyperesthesia and facilitated spatial summation of deep-tissue pain in knee osteoarthritis patients after knee replacement. *Arthritis Rheum*. 2012;64(9):2907-2916.
25. Skou ST, Graven-Nielsen T, Rasmussen S, Simonsen O, Laursen MB, Arendt-Nielsen L. Widespread sensitization in patients with chronic pain after revision total knee arthroplasty. *Pain*. 2013;154(9):1588-94.
26. Arendt-Nielsen L, Nie H, Laursen MB, et al. Sensitization in patients with painful knee osteoarthritis. *Pain*. 2010;149(3):573-581.
27. Kavchak AJ, Fernandez-de-Las-Penas C, Rubin LH, et al. Association between altered somatosensation, pain, and knee stability in patients with severe knee osteoarthrosis. *Clin J Pain*. 2012;28(7):589-594.
28. Dye SF, Vaupel GL, Dye CC. Conscious neurosensory mapping of the internal structures of the human knee without intraarticular anesthesia. *Am J Sports Med*. 1998;26(6):773.
29. Schaible HG, Grubb BD. Afferent and spinal mechanisms of joint pain. *Pain*. 1993;55(1):5-54.
30. Andrew D, Greenspan JD. Mechanical and heat sensitization of cutaneous nociceptors after peripheral inflammation in the rat. *J Neurophysiol*. 1999;82(5):2649-2656.
31. Wenham CY, Conaghan PG. The role of synovitis in osteoarthritis. *Ther Adv musculoskelet Dis*. 2010;2(6):349-359.
32. Pelletier JP, Martel-Pelletier J, Abramson SB. Osteoarthritis, an inflammatory disease: Potential implication for the selection of new therapeutic targets. *Arthritis Rheum*. 2001;44(6):1237-1247.
33. Wilder-Smith OH. A paradigm-shift in pain medicine. Doctor of Science Thesis. Aalborg University, 2013.
34. Edwards RR, Haythornthwaite JA, Tella P, Max MB, Raja S. Basal heat pain thresholds predict opioid analgesia in patients with postherpetic neuralgia. *Anesthesiology*. 2006;104(6):1243-1248.
35. Dickenson AH, Besson J. The pharmacology of pain. 1997. Springer Verlag.
36. Dray A, Urban L. New pharmacological strategies for pain relief. *Annu Rev Pharmacol Toxicol*. 1996;36(1):253-280.
37. Epstein FH, Stein C. The control of pain in peripheral tissue by opioids. *N Engl J Med*. 1995;332(25):1685-1690.

38. Watkins L, Martin D, Ulrich P, Tracey K, Maier S. Evidence for the involvement of spinal cord glia in subcutaneous formalin induced hyperalgesia in the rat. *Pain*. 1997;71(3):225-235.
39. Dickenson A, Chapman V, Green G. The pharmacology of excitatory and inhibitory amino acid-mediated events in the transmission and modulation of pain in the spinal cord. *Gen Pharmacol*. 1997;28(5):633-638.
40. Schaible HG, Schmidt RF. Neurophysiology of chronic inflammatory pain: Electrophysiological recordings from spinal cord neurons in rats with prolonged acute and chronic unilateral inflammation at the ankle. *Prog Brain Res*. 1996;110:167-176.
41. Woolf C. Somatic pain-pathogenesis and prevention. *Br J Anaesth*. 1995;75:169-169.
42. Zieglgänsberger W, Toile TR. The pharmacology of pain signalling. *Curr Opin Neurobiol*. 1993;3(4):611-618.
43. Woolf CJ, Salter MW. Neuronal plasticity: Increasing the gain in pain. *Science*. 2000;288(5472):1765-1769.
44. Wilder-Smith OH, Arendt-Nielsen L. Postoperative hyperalgesia: Its clinical importance and relevance. *Anesthesiology*. 2006;104(3):601-607.
45. Bouhassira D, Chitour D, Villaneuva L, Le Bars D. The spinal transmission of nociceptive information: Modulation by the caudal medulla. *Neuroscience*. 1995;69(3):931-938.
46. Price DD. Psychological and neural mechanisms of the affective dimension of pain. *Science*. 2000;288(5472):1769-1772.
47. Porreca F, Ossipov MH, Gebhart G. Chronic pain and medullary descending facilitation. *Trends Neurosci*. 2002;25(6):319-325.
48. Gebhart G. Descending modulation of pain. *Neurosci & Biobehav Rev*. 2004;27(8):729-737.
49. Kosek E, Ordeberg G. Lack of pressure pain modulation by heterotopic noxious conditioning stimulation in patients with painful osteoarthritis before, but not following, surgical pain relief. *Pain*. 2000;88(1):69.
50. Edwards RR, Ness TJ, Weigent DA, Fillingim RB. Individual differences in diffuse noxious inhibitory controls (DNIC): Association with clinical variables. *Pain*. 2003;106(3):427-437.
51. Arendt-Nielsen L. Induction and assessment of experimental pain from human skin, muscle, and viscera. Proceedings of the 8th World Congress on Pain. 1997:393-425.

52. Arezzo J, Bolton C, Boulton A, et al. QUANTITATIVE SENSORY TESTING-A CONSENSUS REPORT FROM THE PERIPHERAL NEUROPATHY ASSOCIATION. *Neurology*. 1993;43(5):1050-1052.
53. Cruccu G, Anand P, Attal N, et al. EFNS guidelines on neuropathic pain assessment. *Eur J Neurol*. 2004;11(3):153-162.
54. Dworkin RH, Backonja M, Rowbotham MC, et al. Advances in neuropathic pain: Diagnosis, mechanisms, and treatment recommendations. *Arch Neurol*. 2003;60(11):1524-1534.
55. Dyck PJ, O'Brien PC, Kosanke JL, Gillen DA, Karnes JL. A 4, 2, and 1 stepping algorithm for quick and accurate estimation of cutaneous sensation threshold. *Neurology*. 1993;43(8):1508-1512.
56. Dyck PJ, Zimmerman I, Gillen DA, Johnson D, Karnes JL, O'Brien PC. Cool, warm, and heat-pain detection thresholds: Testing methods and inferences about anatomic distribution of receptors. *Neurology*. 1993;43(8):1500-1508.
57. Fields HL, Rowbotham M, Baron R. Postherpetic neuralgia: Irritable nociceptors and deafferentation. *Neurobiol Dis*. 1998;5(4):209-227.
58. A. Gescheider, SJ Bolanowski, KR Hardick, G. The frequency selectivity of information-processing channels in the tactile sensory system. *Somatosens Mot Res*. 2001;18(3):191-201.
59. Gracely RH, Grant MA, Giesecke T. Evoked pain measures in fibromyalgia. *Best Pract Res Clin Rheum*. 2003;17(4):593-609.
60. Shy ME, Frohman EM, So YT, et al. Quantitative sensory testing: Report of the therapeutics and technology assessment subcommittee of the american academy of neurology. *Neurology*. 2003;60(6):898-904.
61. Tolle TR, Baron R. Neuropathic pain. basic principles for successful therapy. *MMW Fortschr Med*. 2002;144(21):41-44.
62. Rolke R, Magerl W, Campbell KA, et al. Quantitative sensory testing: A comprehensive protocol for clinical trials. *Eur J Pain*. 2006;10(1):77-88.
63. Courtney CA, KAVCHAK AE, Lowry CD, O'HEARN MA. Interpreting joint pain: Quantitative sensory testing in musculoskeletal management. *J Orthop Sports Phys Ther*. 2010;40(12):818-825.
64. Zaslansky R, Yarnitsky D. Clinical applications of quantitative sensory testing (QST). *J Neurol Sci*. 1998;153(2):215-238.

65. Drewes AM, Schipper KP, Dimcevski G, et al. Multimodal assessment of pain in the esophagus: A new experimental model. *Am J Physiol Gastrointest Liver Physiol*. 2002;283(1):G95-103.
66. Drewes AM, Schipper K, Dimcevski G, et al. Multi-modal induction and assessment of allodynia and hyperalgesia in the human oesophagus. *Eur J Pain*. 2003;7(6):539-549.
67. Farrell MJ, Gibson SJ, McMeeken JM, Helme RD. Increased movement pain in osteoarthritis of the hands is associated with $\alpha\beta$ -mediated cutaneous mechanical sensitivity. *J Pain*. 2000;1(3):229-242.
68. Wilder-Smith C, Hill L, Spargo K, Kalla A. Treatment of severe pain from osteoarthritis with slow-release tramadol or dihydrocodeine in combination with NSAID's: A randomised study comparing analgesia, antinociception and gastrointestinal effects. *Pain*. 2001;91(1):23-31.
69. Imamura M, Imamura ST, Kaziyama HHS, et al. Impact of nervous system hyperalgesia on pain, disability, and quality of life in patients with knee osteoarthritis: A controlled analysis. *Arthritis Care Res*. 2008;59(10):1424-1431.
70. Suokas A, Walsh D, McWilliams D, et al. Quantitative sensory testing in painful osteoarthritis: A systematic review and meta-analysis. *Osteoarthritis Cartilage*. 2012;20(10):1075-85.
71. Lluch E, Torres R, Nijs J, Van Oosterwijck J. Evidence for central sensitization in patients with osteoarthritis pain: A systematic literature review. *Eur JPain*. 2014.
72. Kosek E, Ordeberg G. Abnormalities of somatosensory perception in patients with painful osteoarthritis normalize following successful treatment. *Eur J Pain*. 2000;4(3):229-238.
73. Lee YC, Lu B, Bathon JM, et al. Pain sensitivity and pain reactivity in osteoarthritis. *Arthritis Care Res*. 2011;63(3):320-327.
74. Kavchak AJE, Fernández-de-las-Peñas C, Rubin LH, et al. Association between altered somatosensation, pain, and knee stability in patients with severe knee osteoarthrosis. *Clin J Pain*. 2012;28(7):589-594.
75. O'Driscoll SL, Jayson MI. Pain threshold analysis in patients with osteoarthrosis of hip. *Br Med J*. 1974;3(5933):714-715.
76. Lundblad H, Kreicbergs A, Jansson KA. Prediction of persistent pain after total knee replacement for osteoarthritis. *J Bone Joint Surg Br*. 2008;90(2):166-171.
77. Hendiani JA, Westlund KN, Lawand N, Goel N, Lisse J, McNearney T. Mechanical sensation and pain thresholds in patients with chronic arthropathies. *J Pain*. 2003;4(4):203-211.

78. Goodin BR, Glover TL, Sotolongo A, et al. The association of greater dispositional optimism with less endogenous pain facilitation is indirectly transmitted through lower levels of pain catastrophizing. *J Pain*. 2013;14(2):126-135.
79. Courtney CA, Lewek MD, Witte PO, Chmell SJ, Hornby TG. Heightened flexor withdrawal responses in subjects with knee osteoarthritis. *J Pain*. 2009;10(12):1242-1249.
80. Thompson LR, Boudreau R, Newman AB, et al. The association of osteoarthritis risk factors with localized, regional and diffuse knee pain. *Osteoarthritis Cartilage*. 2010;18(10):1244-1249.
81. Arendt-Nielsen L, Fernández-de-Las-Penãs C, Graven-Nielsen T. Basic aspects of musculoskeletal pain: From acute to chronic pain. *J Man Manip Ther*. 2011;19(4):186-193.
82. Buvanendran A, Kroin JS, Della Valle CJ, Kari M, Moric M, Tuman KJ. Perioperative oral pregabalin reduces chronic pain after total knee arthroplasty: A prospective, randomized, controlled trial. *Anesthesia Analg*. 2010;110(1):199-207.
83. Skou S, Graven-Nielsen T, Rasmussen S, Simonsen O, Laursen M, Arendt-Nielsen L. Facilitation of pain sensitization in knee osteoarthritis and persistent post-operative pain: A cross-sectional study. *Eur J Pain*. 2014;18(7):1024-31.
84. Neziri AY, Curatolo M, Limacher A, et al. Ranking of parameters of pain hypersensitivity according to their discriminative ability in chronic low back pain. *Pain*. 2012;153(10):2083-2091.
85. Graven-Nielsen T, Arendt-Nielsen L. Assessment of mechanisms in localized and widespread musculoskeletal pain. *Nat Rev Rheumatol*. 2010;6(10):599-606.
86. Graven-Nielsen T. Fundamentals of muscle pain, referred pain, and deep tissue hyperalgesia. *Scand J Rheumatol*. 2006;35(S122):1-43.
87. Graven-Nielsen T, Mense S, Arendt-Nielsen L. Painful and non-painful pressure sensations from human skeletal muscle. *Exp Brain Res*. 2004;159(3):273-283.
88. Finocchietti S, Takahashi K, Okada K, Watanabe Y, Graven-Nielsen T, Mizumura K. Deformation and pressure propagation in deep tissue during mechanical painful pressure stimulation. *Med Biol Eng Comput*. 2013;51(1-2):113-122.
89. Rathleff MS, Roos EM, Olesen JL, Rasmussen S, Arendt-Nielsen L. Lower mechanical pressure pain thresholds in female adolescents with patellofemoral pain syndrome. *J Orthop Sports Phy Ther*. 2013;43(6):414-421.

90. Arendt-Nielsen L, Graven-Nielsen T. Translational musculoskeletal pain research. *Best Pract Res Clin Rheumatol*. 2011;25(2):209-226.
91. Biurrun Manresa JA, Neziri AY, Curatolo M, Arendt-Nielsen L, Andersen OK. Reflex receptive fields are enlarged in patients with musculoskeletal low back and neck pain. *Pain*. 2013.
92. Arendt-Nielsen L, Graven-Nielsen T. Central sensitization in fibromyalgia and other musculoskeletal disorders. *Curr Pain Headache Rep*. 2003;7(5):355-361.
93. Price DD, Mao J, Frenk H, Mayer DJ. The N-methyl-D-aspartate receptor antagonist dextromethorphan selectively reduces temporal summation of second pain in man. *Pain*. 1994;59(2):165-174.
94. Vierck CJ, Jr, Cannon RL, Fry G, Maixner W, Whitsel BL. Characteristics of temporal summation of second pain sensations elicited by brief contact of glabrous skin by a preheated thermode. *J Neurophysiol*. 1997;78(2):992-1002.
95. Graven-Nielsen T, Aspegren Kendall S, Henriksson KG, et al. Ketamine reduces muscle pain, temporal summation, and referred pain in fibromyalgia patients. *Pain*. 2000;85(3):483-491.
96. Weissman-Fogel I, Granovsky Y, Crispel Y, et al. Enhanced presurgical pain temporal summation response predicts post-thoracotomy pain intensity during the acute postoperative phase. *J Pain*. 2009;10(6):628-636.
97. Perkins FM, Kehlet H. Chronic pain as an outcome of surgery: A review of predictive factors. *Anesthesiology*. 2000;93(4):1123-1133.
98. Arendt-Nielsen L, Sluka KA, Nie HL. Experimental muscle pain impairs descending inhibition. *Pain*. 2008;140(3):465-471.
99. King CD, Wong F, Currie T, Mauderli AP, Fillingim RB. Deficiency in endogenous modulation of prolonged heat pain in patients with irritable bowel syndrome and temporomandibular disorder. *Pain*. 2009;143(3):172-178.
100. Kosek E, Hansson P. Modulatory influence on somatosensory perception from vibration and heterotopic noxious conditioning stimulation (HNCS) in fibromyalgia patients and healthy subjects. *Pain*. 1997;70(1):41-51.
101. Julien N, Goffaux P, Arsenault P, Marchand S. Widespread pain in fibromyalgia is related to a deficit of endogenous pain inhibition. *Pain*. 2005;114(1):295-302.

102. Sandrini G, Rossi P, Milanov I, Serrao M, Cecchini A, Nappi G. Abnormal modulatory influence of diffuse noxious inhibitory controls in migraine and chronic tension-type headache patients. *Cephalalgia*. 2006;26(7):782-789.
103. Phillips K, Clauw DJ. Central pain mechanisms in chronic pain states—maybe it is all in their head. *Best Pract Res Clin Rheumatol*. 2011;25(2):141-154.
104. Chappell AS, Desai D, Liu-Seifert H, et al. A double-blind, randomized, placebo-controlled study of the efficacy and safety of duloxetine for the treatment of chronic pain due to osteoarthritis of the knee. *Pain Pract*. 2011;11(1):33-41.
105. Chappell AS, Ossanna MJ, Liu-Seifert H, et al. Duloxetine, a centrally acting analgesic, in the treatment of patients with osteoarthritis knee pain: A 13-week, randomized, placebo-controlled trial. *Pain*. 2009;146(3):253-260.
106. Yarnitsky D, Crispel Y, Eisenberg E, et al. Prediction of chronic post-operative pain: Pre-operative DNIC testing identifies patients at risk. *Pain*. 2008;138(1):22-28.
107. Martel MO, Wasan AD, Edwards RR. Sex differences in the stability of conditioned pain modulation (CPM) among patients with chronic pain. *Pain Med*. 2013;14(11):1757-1768.
108. Hjermstad MJ, Fayers PM, Haugen DF, et al. Studies comparing numerical rating scales, verbal rating scales, and visual analogue scales for assessment of pain intensity in adults: A systematic literature review. *J Pain Symptom Manage*. 2011;41(6):1073-1093.
109. Jensen MP, Karoly P, Braver S. The measurement of clinical pain intensity: A comparison of six methods. *Pain*. 1986;27(1):117-126.
110. Insall JN, Dorr LD, Scott RD, Scott WN. Rationale of the knee society clinical rating system. *Clin Orthop*. 1989;248(1):13-14.
111. Bellamy N, Buchanan W. A preliminary evaluation of the dimensionality and clinical importance of pain and disability in osteoarthritis of the hip and knee. *Clin Rheumatol*. 1986;5(2):231-241.
112. Roos EM, Roos HP, Lohmander LS, Ekdahl C, Beynnon BD. Knee injury and osteoarthritis outcome score (KOOS)—development of a self-administered outcome measure. *J Orthop Sports Phys Ther*. 1998;28(2):88-96.

113. Hawker G, Davis A, French M, et al. Development and preliminary psychometric testing of a new OA pain measure—an OARSI/OMERACT initiative. *Osteoarthritis Cartilage*. 2008;16(4):409-414.
114. Roos EM, Lohmander LS. The knee injury and osteoarthritis outcome score (KOOS): From joint injury to osteoarthritis. *Health Qual Life Outcomes*. 2003;1(1):64.
115. Elizabeth A, Jeffrey N, R John W, Clement B. Validity and responsiveness of the knee society clinical rating system in comparison with the SF-36 and WOMAC. *J Bone Joint Surg Am*. 2001;83(12):1856-1864.
116. Roos EM, Toksvig-Larsen S. Knee injury and osteoarthritis outcome score (KOOS)-validation and comparison to the WOMAC in total knee replacement. *Health Qual Life Outcomes*. 2003;1(1):17.
117. Svensson I, Sjöström B, Haljamäe H. Assessment of pain experiences after elective surgery. *J Pain Symptom Manage*. 2000;20(3):193-201.
118. Kehlet H, Jensen TS, Woolf CJ. Persistent postsurgical pain: Risk factors and prevention. *Lancet*. 2006;367(9522):1618-1625.
119. Lynch EP, Lazor MA, Gellis JE, Orav J, Goldman L, Marcantonio ER. Patient experience of pain after elective noncardiac surgery. *Anesthesia Analg*. 1997;85(1):117-123.
120. Dolin SJ, Cashman JN, Bland JM. Effectiveness of acute postoperative pain management: I. evidence from published data. *Br J Anaesth*. 2002;89(3):409-423.
121. Apfelbaum JL, Chen C, Mehta SS, Gan TJ. Postoperative pain experience: Results from a national survey suggest postoperative pain continues to be undermanaged. *Anesthesia Analg*. 2003;97(2):534-540.
122. Steegers MA, Wolters B, Evers AW, Strobbe L, Wilder-Smith OH. Effect of axillary lymph node dissection on prevalence and intensity of chronic and phantom pain after breast cancer surgery. *J Pain*. 2008;9(9):813-822.
123. Steegers MA, Snik DM, Verhagen AF, van der Drift, Miep A, Wilder-Smith OH. Only half of the chronic pain after thoracic surgery shows a neuropathic component. *J Pain*. 2008;9(10):955-961.
124. Mikkelsen T, Werner MU, Lassen B, Kehlet H. Pain and sensory dysfunction 6 to 12 months after inguinal herniotomy. *Anesthesia Analg*. 2004;99(1):146-151.

125. Nikolajsen L, Brandsborg B, Lucht U, Jensen TS, Kehlet H. Chronic pain following total hip arthroplasty: A nationwide questionnaire study. *Acta Anaesthesiol Scand*. 2006;50(4):495-500.
126. Nikolajsen L, Kristensen AD, Thillemann TM, et al. Pain and somatosensory findings in patients 3 years after total hip arthroplasty. *Eur J Pain*. 2009;13(6):576-581.
127. Pluijms W, Steegers M, Verhagen A, Scheffer G, Wilder-Smith O. Chronic post-thoracotomy pain: A retrospective study. *Acta Anaesthesiol Scand*. 2006;50(7):804-808.
128. Jensen TS, Krebs B, Nielsen J, Rasmussen P. Immediate and long-term phantom limb pain in amputees: Incidence, clinical characteristics and relationship to pre-amputation limb pain. *Pain*. 1985;21(3):267-278.
129. Nikolajsen L, Ilkjær S, Krøner K, Christensen JH, Jensen TS. The influence of preamputation pain on postamputation stump and phantom pain. *Pain*. 1997;72(3):393-405.
130. Pinto PR, McIntyre T, Ferrero R, Almeida A, Araújo-Soares V. Risk factors for moderate and severe persistent pain in patients undergoing total knee and hip arthroplasty: A prospective predictive study. *PloS one*. 2013;8(9):e73917.
131. Ellis A. Reason and emotion in psychotherapy. 1962. Citadel, Rev Sub Edition (reprint 1994).
132. Pavlin DJ, Sullivan MJ, Freund PR, Roesen K. Catastrophizing: A risk factor for postsurgical pain. *Clin J Pain*. 2005;21(1):83-90.
133. Strulov L, Zimmer EZ, Granot M, Tamir A, Jakobi P, Lowenstein L. Pain catastrophizing, response to experimental heat stimuli, and post-cesarean section pain. *J Pain*. 2007;8(3):273-279.
134. Quartana PJ, Campbell CM, Edwards RR. Pain catastrophizing: A critical review. *Expert Rev Neurother*. 2009;9(5):745-58.
135. Riddle DL, Wade JB, Jiranek WA, Kong X. Preoperative pain catastrophizing predicts pain outcome after knee arthroplasty. *Clin Orthop Relat Res*. 2010;468(3):798-806.
136. Papaioannou M, Skapinakis P, Damigos D, Mavreas V, Broumas G, Palgimesi A. The role of catastrophizing in the prediction of postoperative pain. *Pain Med*. 2009;10(8):1452-1459.
137. Lidgren L, Sundberg M, Dahl AW, Robertsson A. Swedish knee arthroplasty register, annual report. Lund, Sweden. 2010.
138. Roberts VI, Esler CN, Harper WM. A 15-year follow-up study of 4606 primary total knee replacements. *J Bone Joint Surg Br*. 2007;89(11):1452-1456.

139. Carr AJ, Robertsson O, Graves S, et al. Knee replacement. *Lancet*. 2012;379(9823):1331-1340.
140. Littman GS, Walker BR, Schneider BE. Reassessment of verbal and visual analog ratings in analgesic studies. *Clin Pharmacol Ther*. 1985;38(1):16-23.
141. Wallenstein SL, Kaiko R, Houde RW. Clinical evaluation of mild analgesics: The measurement of clinical pain. *Br J Clin Pharmacol*. 1980;10(S2):319S-327S.
142. Collins SL, Moore RA, McQuay HJ. The visual analogue pain intensity scale: What is moderate pain in millimetres? *Pain*. 1997;72(1):95-97.
143. Olesen SS, Graversen C, Bouwense SA, van Goor H, Wilder-Smith OH, Drewes AM. Quantitative sensory testing predicts pregabalin efficacy in painful chronic pancreatitis. *PLoS one*. 2013;8(3):e57963.
144. Biurrun Manresa JA, Neziri AY, Curatolo M, Arendt-Nielsen L, Andersen OK. Test-retest reliability of the nociceptive withdrawal reflex and electrical pain thresholds after single and repeated stimulation in patients with chronic low back pain. *Eur J Appl Physiol*. 2011;111(1):83-92.
145. Baron R, Binder A, Wasner G. Neuropathic pain: Diagnosis, pathophysiological mechanisms, and treatment. *Lancet Neuro*. 2010;9(8):807-819.
146. Price DD. Characteristics of second pain and flexion reflexes indicative of prolonged central summation. *Exp Neurol*. 1972;37(2):371-387.
147. Price DD, Hu JW, Dubner R, Gracely RH. Peripheral suppression of first pain and central summation of second pain evoked by noxious heat pulses. *Pain*. 1977;3(1):57-68.
148. Neogi T, Frey-Law L, Scholz J, et al. Sensitivity and sensitisation in relation to pain severity in knee osteoarthritis: Trait or state? *Ann Rheum Dis*. 2013.
149. Bisgaard T, Klarskov B, Rosenberg J, Kehlet H. Characteristics and prediction of early pain after laparoscopic cholecystectomy. *Pain*. 2001;90(3):261-269.
150. Chu LF, Clark DJ, Angst MS. Opioid tolerance and hyperalgesia in chronic pain patients after one month of oral morphine therapy: A preliminary prospective study. *J Pain*. 2006;7(1):43-48.
151. Mitchell LA, MacDonald RA, Brodie EE. Temperature and the cold pressor test. *J Pain*. 2004;5(4):233-237.
152. von Baeyer CL, Piira T, Chambers CT, Trapanotto M, Zeltzer LK. Guidelines for the cold pressor task as an experimental pain stimulus for use with children. *J Pain*. 2005;6(4):218-227.

153. Sandkühler J. Learning and memory in pain pathways. *Pain*. 2000;88(2):113-118.
154. Miletic G, Miletic V. Long-term changes in sciatic-evoked A-fiber dorsal horn field potentials accompany loose ligation of the sciatic nerve in rats. *Pain*. 2000;84(2):353-359.
155. Randic M, Jiang MC, Cerne R. Long-term potentiation and long-term depression of primary afferent neurotransmission in the rat spinal cord. *J Neurosci*. 1993;13(12):5228-5241.
156. Sandrini G, Serrao M, Rossi P, Romaniello A, Cruccu G, Willer JC. The lower limb flexion reflex in humans. *Prog Neurobiol*. 2005;77(6):353-395.
157. Desmeules J, Cedraschi C, Rapiti E, et al. Neurophysiologic evidence for a central sensitization in patients with fibromyalgia. *Arthritis Rheum*. 2003;48(5):1420-1429.
158. Banic B, Petersen-Felix S, Andersen OK, et al. Evidence for spinal cord hypersensitivity in chronic pain after whiplash injury and in fibromyalgia. *Pain*. 2004;107(1):7-15.
159. Manresa JAB, Nguyen GP, Curatolo M, Moeslund TB, Andersen OK. Probabilistic model for individual assessment of central hyperexcitability using the nociceptive withdrawal reflex: A biomarker for chronic low back and neck pain. *BMC neuroscience*. 2013;14(1):110.
160. Maier C, Baron R, Tölle T, et al. Quantitative sensory testing in the German research network on neuropathic pain (DFNS): Somatosensory abnormalities in 1236 patients with different neuropathic pain syndromes. *Pain*. 2010;150(3):439-450.
161. Pelletier J, Raynauld J, Abram F, Haraoui B, Choquette D, Martel-Pelletier J. A new non-invasive method to assess synovitis severity in relation to symptoms and cartilage volume loss in knee osteoarthritis patients using MRI. *Osteoarthritis Cartilage*. 2008;16:S8-S13.
162. Fernandez-Madrid F, Karvonen RL, Teitge RA, Miller PR, Negendank WG. MR features of osteoarthritis of the knee. *Magn Reson Imaging*. 1994;12(5):703-709.
163. Baker K, Grainger A, Niu J, et al. Relation of synovitis to knee pain using contrast-enhanced MRIs. *Ann Rheum Dis*. 2010;69(10):1779-1783.
164. Hunter DJ, Lo GH, Gale D, Grainger AJ, Guermazi A, Conaghan PG. The reliability of a new scoring system for knee osteoarthritis MRI and the validity of bone marrow lesion assessment: BLOKS (boston leeds osteoarthritis knee score). *Ann Rheum Dis*. 2008;67(2):206-211.
165. Peterfy C, Guermazi A, Zaim S, et al. Whole-organ magnetic resonance imaging score (WORMS) of the knee in osteoarthritis. *Osteoarthritis Cartilage*. 2004;12(3):177-190.

166. Felson DT, Lynch J, Guermazi A, et al. Comparison of BLOKS and WOMBS scoring systems part II. longitudinal assessment of knee MRIs for osteoarthritis and suggested approach based on their performance: Data from the osteoarthritis initiative. *Osteoarthritis Cartilage*. 2010;18(11):1402-1407.
167. Lynch JA, Roemer FW, Nevitt MC, et al. Comparison of BLOKS and WOMBS scoring systems part I. cross sectional comparison of methods to assess cartilage morphology, meniscal damage and bone marrow lesions on knee MRI: Data from the osteoarthritis initiative. *Osteoarthritis Cartilage*. 2010;18(11):1393-1401.
168. Hill CL, Hunter DJ, Niu J, et al. Synovitis detected on magnetic resonance imaging and its relation to pain and cartilage loss in knee osteoarthritis. *Ann Rheum Dis*. 2007;66(12):1599-1603.
169. Ishijima M, Watari T, Naito K, et al. Relationships between biomarkers of cartilage, bone, synovial metabolism and knee pain provide insights into the origins of pain in early knee osteoarthritis. *Arthritis Res Ther*. 2011;13(1):R22.
170. Lovell C, Nicholls A, Jayson M, Bailey A. Changes in the collagen of synovial membrane in rheumatoid arthritis and effect of D-penicillamine. *Clin Sci*. 1978;55(Pt 1):31-40.
171. Eyre DR, Muir H. Type III collagen: A major constituent of rheumatoid and normal human synovial membrane. *Connect Tissue Res*. 1975;4(1):11-16.
172. Bay-Jensen AC, Wichuk S, Byrjalsen I, et al. Circulating protein fragments of cartilage and connective tissue degradation are diagnostic and prognostic markers of rheumatoid arthritis and ankylosing spondylitis. *PloS one*. 2013;8(1):e54504.
173. Sofie SA, Wang J, Morten K, Bioscience N. Matrix metalloproteinase-dependent turnover of cartilage, synovial membrane, and connective tissue is elevated in rats with collagen induced arthritis. *J Trans Med*. 2012;10:195.
174. Siebuhr AS, Bay-Jensen AC, Leeming DJ, et al. Serological identification of fast progressors of structural damage with rheumatoid arthritis. *Arthritis Res Ther*. 2013;15(4):R86.
175. Bay-Jensen A, Liu Q, Byrjalsen I, et al. Enzyme-linked immunosorbent assay (ELISAs) for metalloproteinase derived type II collagen neoepitope, CIIM—Increased serum CIIM in subjects with severe radiographic osteoarthritis. *Clin Biochem*. 2011;44(5):423-429.
176. Kushner I. C-reactive protein and the acute-phase response. *Hosp Pract (Off Ed)*. 1990;25(3A):13, 16, 21-8.

177. Skjøt-Arkil H, Schett G, Zhang C, et al. Investigation of two novel biochemical markers of inflammation, matrix metalloproteinase and cathepsin generated fragments of C-reactive protein, in patients with ankylosing spondylitis. *Clin Exp Rheumatol*. 2012.
178. Arendt-Nielsen L, Eskehave T, Karsdal M, et al. Association between pain and serological biomarkers in patients with different degrees of knee osteoarthritis. Abstract Book of the 8th Congress of the European Federation of IASP Chapters (EFIC). 2013, Florence, Italy, no. 177.
179. Kadam UT, Jordan K, Croft PR. Clinical comorbidity in patients with osteoarthritis: A case-control study of general practice consultants in England and Wales. *Ann Rheum Dis*. 2004;63(4):408-414.
180. van den Akker M, Buntinx F, Roos S, Knottnerus JA. Problems in determining occurrence rates of multimorbidity. *J Clin Epidemiol*. 2001;54(7):675-679.
181. van Dijk GM, Veenhof C, Schellevis F, et al. Comorbidity, limitations in activities and pain in patients with osteoarthritis of the hip or knee. *BMC musculoskelet Dis*. 2008;9(1):95.
182. Caporali R, Cimmino MA, Sarzi-Puttini P, et al. Comorbid conditions in the AMICA study patients: Effects on the quality of life and drug prescriptions by general practitioners and specialists. *Semin Arthritis Rheum*. 2005;35(1):31-37.
183. Schellevis FG, van der Velden J, van de Lisdonk E, Van Eijk, J Th M, van Weel Cv. Comorbidity of chronic diseases in general practice. *J Clin Epidemiol*. 1993;46(5):469-473.
184. Yarnitsky D, Granot M, Nahman-Averbuch H, Khamaisi M, Granovsky Y. Conditioned pain modulation predicts duloxetine efficacy in painful diabetic neuropathy. *Pain*. 2012;153(6):1193-1198.
185. Yusuf E, Kortekaas MC, Watt I, Huizinga TW, Kloppenburg M. Do knee abnormalities visualised on MRI explain knee pain in knee osteoarthritis? A systematic review. *Ann Rheum Dis*. 2011;70(1):60-67.
186. Rosenquist C, Fledelius C, Christgau S, et al. Serum CrossLaps one step ELISA. first application of monoclonal antibodies for measurement in serum of bone-related degradation products from C-terminal telopeptides of type I collagen. *Clin Chem*. 1998;44(11):2281-2289.
187. Leeming D, He Y, Veidal S, et al. A novel marker for assessment of liver matrix remodeling: An enzyme-linked immunosorbent assay (ELISA) detecting a MMP generated type I collagen neo-epitope (C1M). *Biomarkers*. 2011;16(7):616-628.

188. Goldring MB, Otero M. Inflammation in osteoarthritis. *Curr Opin Rheumatol*. 2011;23(5):471-478.
189. Roemer FW, Zhang Y, Niu J, et al. Tibiofemoral joint osteoarthritis: Risk factors for MR-depicted fast cartilage loss over a 30-month period in the multicenter osteoarthritis Study1. *Radiology*. 2009;252(3):772-780.
190. Zhang Y, Nevitt M, Niu J, et al. Fluctuation of knee pain and changes in bone marrow lesions, effusions, and synovitis on magnetic resonance imaging. *Arthritis Rheum*. 2011;63(3):691-699.
191. Pearle A, Scanzello C, George S, et al. Elevated high-sensitivity C-reactive protein levels are associated with local inflammatory findings in patients with osteoarthritis. *Osteoarthritis Cartilage*. 2007;15(5):516-523.
192. Rhodes B, Fürnrohr BG, Vyse TJ. C-reactive protein in rheumatology: Biology and genetics. *Nature Rev Rheumatol*. 2011;7(5):282-289.
193. Bejon P, Byren I, Atkins BL, et al. Serial measurement of the C-reactive protein is a poor predictor of treatment outcome in prosthetic joint infection. *J Antimicrob Chemother*. 2011;66(7):1590-1593.
194. Stürmer T, Brenner H, Koenig W, Günther K. Severity and extent of osteoarthritis and low grade systemic inflammation as assessed by high sensitivity C reactive protein. *Ann Rheum Dis*. 2004;63(2):200-205.
195. Berenbaum F. Osteoarthritis as an inflammatory disease (osteoarthritis is not osteoarthrosis!). *Osteoarthritis Cartilage*. 2013;21(1):16-21.
196. Karsdal MA, Henriksen K, Leeming DJ, Woodworth T, Vassiliadis E, Bay-Jensen A. Novel combinations of post-translational modification (PTM) neo-epitopes provide tissue-specific biochemical markers—are they the cause or the consequence of the disease? *Clin Biochem*. 2010;43(10):793-804.
197. Imhof A, Froehlich M, Brenner H, Boeing H, Pepys MB, Koenig W. Effect of alcohol consumption on systemic markers of inflammation. *Lancet*. 2001;357(9258):763-767.
198. Miller GD, Nicklas BJ, Loeser RF. Inflammatory biomarkers and physical function in older, obese adults with knee pain and Self-Reported osteoarthritis after intensive Weight-Loss therapy. *J Am Geriatr Soc*. 2008;56(4):644-651.

199. Felson DT. The current and future status of biomarkers in osteoarthritis. *J Rheumatol*. 2014;41(5):834-836.
200. Benyamin R, Trescot AM, Datta S, Buenaventura R, Adlaka R, Sehgal N, Glaser SE, Vallejo R. Opioid complications and side effects. *Pain physician*. 2008;11:S105-S120.
201. Martel MO, Jamison RN, Wasan AD, Edwards RR. The association between catastrophizing and craving in patients with chronic pain prescribed opioid therapy: A preliminary analysis. *Pain Med*. 2014 (epub ahead of print).
202. Mercadante S, Villari P, Ferrera P. Burst ketamine to reverse opioid tolerance in cancer pain. *J Pain Symptom Manage*. 2003;25(4):302-305.
203. Mercadante S, Arcuri E. Hyperalgesia and opioid switching. *Am J Hosp Palliat Care*. 2005;22(4):291-294.
204. Strayer RJ, Nelson LS. Adverse events associated with ketamine for procedural sedation in adults. *Am J Emerg Med*. 2008;26(9):985-1028.
205. Melendez E, Bachur R. Serious adverse events during procedural sedation with ketamine. *Pediatr Emerg Care*. 2009;25(5):325-328.
206. Rosenstock J, Tuchman M, LaMoreaux L, Sharma U. Pregabalin for the treatment of painful diabetic peripheral neuropathy: A double-blind, placebo-controlled trial. *Pain*. 2004;110(3):628-638.
207. Woolf CJ, Chong M. Preemptive analgesia-treating postoperative pain by preventing the establishment of central sensitization. *Anesthesia Analg*. 1993;77(2):362-379.
208. Vadivelu N, Mitra S, Schermer E, Kodumudi V, Kaye AD, Urman RD. Preventive analgesia for postoperative pain control: A broader concept. *Local Reg anesth*. 2014;7:17-22.
209. Wong DT. Duloxetine (LY 248686): An inhibitor of serotonin and noradrenaline uptake and an antidepressant drug candidate. *Expert Opin Investig Drugs*. 1998;7(10):1691-1699.
210. Farrell M, Gibson S, McMeeken J, Helme R. Pain and hyperalgesia in osteoarthritis of the hands. *J Rheumatol*. 2000;27(2):441-447.
211. France CR, Keefe FJ, Emery CF, et al. Laboratory pain perception and clinical pain in postmenopausal women and age-matched men with osteoarthritis: Relationship to pain coping and hormonal status. *Pain*. 2004;112(3):274-281.

212. Moss P, Sluka K, Wright A. The initial effects of knee joint mobilization on osteoarthritic hyperalgesia. *Man Ther.* 2007;12(2):109-118.

213. Gwilym SE, Filippini N, Douaud G, Carr AJ, Tracey I. Thalamic atrophy associated with painful osteoarthritis of the hip is reversible after arthroplasty: A longitudinal voxel-based morphometric study. *Arthritis Rheum.* 2010;62(10):2930-2940.

214. Vance CG, Rakel BA, Blodgett NP, et al. Effects of transcutaneous electrical nerve stimulation on pain, pain sensitivity, and function in people with knee osteoarthritis: A randomized controlled trial. *Phys Ther.* 2012;92(7):898-910.